

# bott vario3

**bott**

New design

New features



Redefining in-vehicle  
equipment

**Van Racking**  
for your Fiat

# bott vario3

As individual as your trade.

Service  
technician



Fitter



Fleet manager



Roofer



Builder



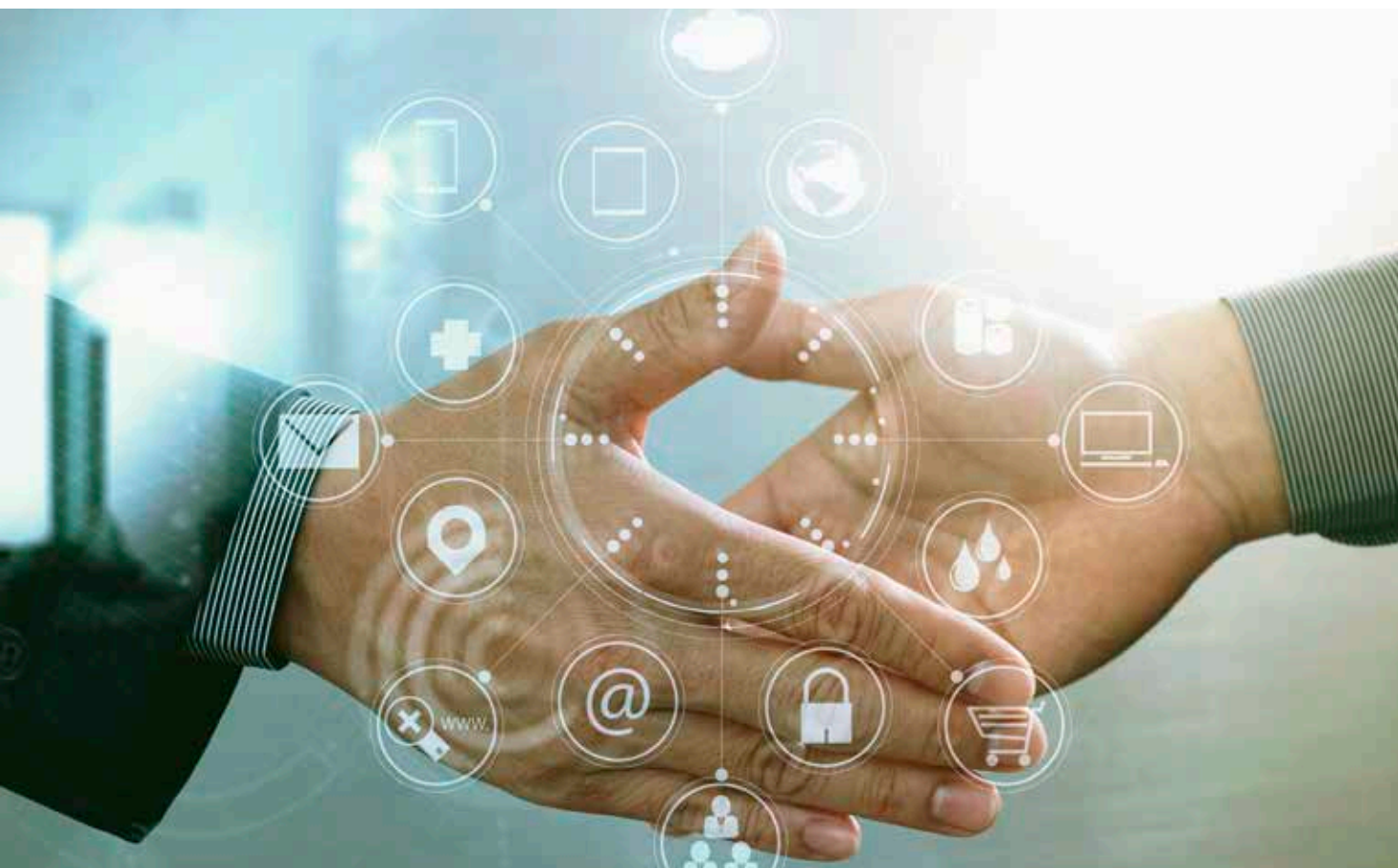
Painter and decorator



Carpenter



Electrician



## Two brands – one system

Regardless of which Fiat model you have opted for, we can offer you the ideal bott vario3 van racking solution. The fixing points perfectly align with your Fiat vehicle's design. We guarantee an optimum planning process, secure installation and damage free removal. We can offer you a range of pre-configured ready to install modules as well as customised designs for your Fiat.

We also have an extensive range of complimentary accessories, load restraint options and organisation systems.

**bott vario3 and Fiat – connected.**

# Your idea - our design

Flexible modular system

Customised solutions

Experienced designers

Make the best use of the  
space available





## Tailored, to suit your needs

Let our experience help you realise your vans' potential. Together with your bott planning expert you can customise the bott vario3 in-vehicle equipment to your individual requirements. The bott team will focus on the requirements of your daily work. The planning begins with a detailed analysis of your needs. We take a close look at the equipment that you must have on a daily basis for your work.

Then our planning experts create a carefully considered van racking design. You'll receive a wide-ranging service offer in addition to the in-vehicle equipment plan. We'll be happy to design an all-inclusive package with you! From applying your own advertising message to the vehicle and its registration to the transfer, we'll support you in all further important steps that must be taken up to the handover of the vehicle.

# Range of services

Services for fleets

Full-service solution

Cooperation with vehicle  
manufacturers

Financing advice

Efficient use of resources



## Your system service provider

You have opted for a Fiat commercial vehicle. By making this choice, you have also established the perfect conditions for the installation of bott vario3 in-vehicle equipment.

We collaborate closely with this vehicle manufacturer to ensure that our van racking perfectly fits into all Fiat commercial vehicle models. The dimensions and fixing points of the bott vario3 components are a perfect fit for your vehicle's design. This means that you can make the best use of the available storage space. It also gua-

rantees a secure installation and therefore safe vehicle handling, as well as – if worse comes to the worst – maximum safety in an accident. This applies to the pre-configured modules as well as our customised van racking solutions, designed by us to perfectly match your needs. Combining your commercial vehicle with bott vario3 van racking therefore means that you have an interconnected system.

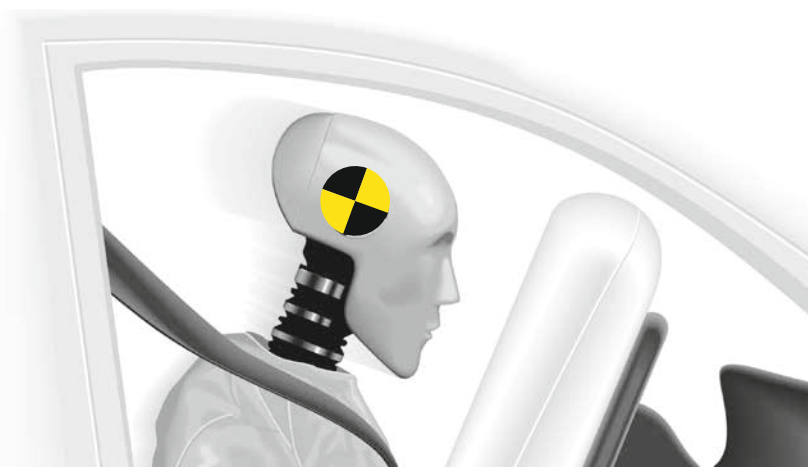
# Crash tested

Proven safety

Meets the ECE R44  
standard

50 km/h impact speed

**bott vario3 in-vehicle equipment always meets the high requirements of the tests. The results demonstrate that the driver and the front passenger can rely on bott vario3 in case of emergency.**



High-speed camera recordings



## Proven safety

Our crash tests have proven how safe the bott vario3 in-vehicle equipment is for you and your employees. Independent experts conduct the tests with a fully-loaded vehicle. The load on the components is equivalent to that experienced during a traffic accident.

The crash tests simulate the collision of the vehicle with an obstacle at a speed of 50 km/h - following ECE directive R44. The bott vario3 in-vehicle equipment more than meets the strict requirements of the tests. In an emergency you can completely rely on bott vario3 in-vehicle equipment.

The tests particularly focus on the fixing points to the bodywork on the floor and the side walls of the vehicle. The overall construction of the in-vehicle equipment is also important. The tests clearly show how it absorbs the enormous forces through systematic distortion of the components. We also pay great attention to all moving parts. Nothing falls off the shelves and the drawers remain tightly closed.



# Floors & Linings

A diagram of a truck body interior, represented by a dark gray rectangle. Three green lines originate from the left side and point to specific features: the top line points to 'Robust bodywork protection', the middle line points to 'Versatile attachment points for load restraint', and the bottom line points to 'Easy-to-clean load space'. The left side of the diagram is decorated with a vertical stack of four colored squares: dark green, medium green, light green, and very light green. A solid green vertical bar runs along the right edge of the diagram.

Robust bodywork protection

Versatile attachment points  
for load restraint

Easy-to-clean load space



## The solution for load space protection

Our load space protection exactly fits the dimensions of your van. The basic fitout is much more than effective protection for the bodywork. The linings contain your van's goods and also provide integrated lashing rails. We offer various packages with numerous different load securing options. The packages can, of course, be further customised.

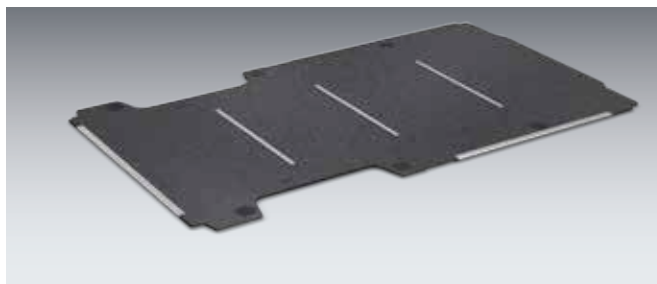
In our extensive product range you'll find lashing rails as well as a wide selection of accessories for panel vans, box bodies or flatbeds. Our large assortment of components with integrated lashing points provides you with the tools to maximise safety on the road.

# Floor

## bott vario floor

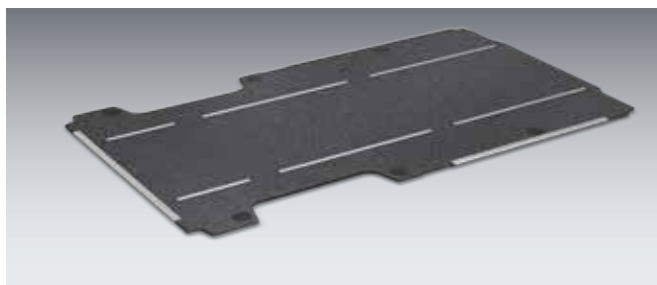


- Lightweight and moisture-repellent 12 mm birch plywood floor
- Top side: robust and slip-resistant synthetic resin film coating with bott decor
- Underside: synthetic resin film coating with smooth finish
- Edges: profiled, moisture-resistant grey finish with aluminium edge protection at the door openings
- If the floors have lashing rails, the edge protection is usually integrated
- Pollutant class E1 as per EN 717-2 / anti-slip R10, taber value > 500
- Fixings included
- Integral hold-down cups simplify the installation process



### bott vario floor with transverse lashing rails

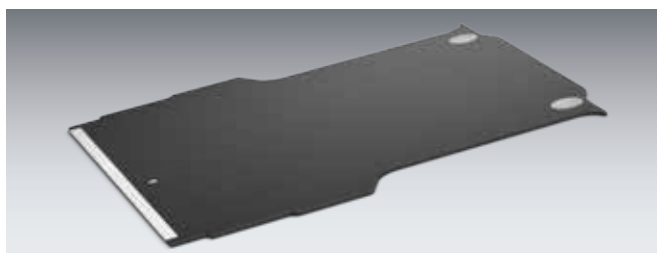
- With aluminium edge protection at the door openings
- The lashing rails are positioned directly below a roof rib
- Plastic covers ensure easy access to vehicle lashing eyes and make it easier to clean the load space



### bott vario floor with longitudinal lashing rails

- With aluminium edge protection at the door openings
- The standard distance between the lashing rails is 880 mm; other distances are possible on request
- Plastic covers ensure easy access to vehicle lashing eyes and make it easier to clean the load space

## bott vario floor - plastic version



- Weather-resistant; suitable for vehicles without hardtop
- High-quality anti-slip surface
- High mechanical stability
- UV resistant
- With edge protection

## bott vario floors in various versions

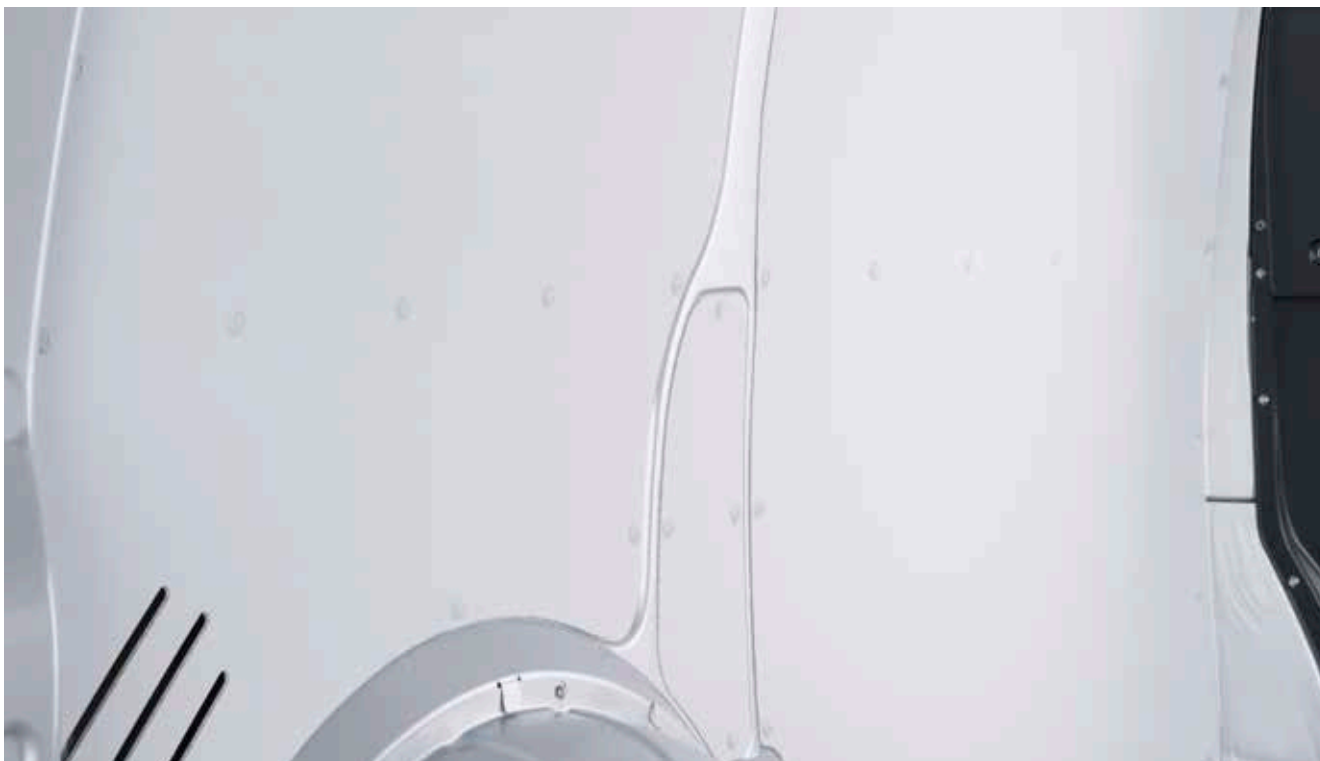
Model	Fullback Doublecab **	Fiorino	Dobló L1	Dobló L2	
Model year	2015	2008	2010	2010	
Wheelbase mm	3000	2513	2755	3105	
Without step-edge protection		11320128	11320134	11320135	
With step-edge protection	11310464	11310128	11310134	11310135	
With transverse lashing rails		11312128	11312134 <sup>1</sup>	11312135 <sup>1</sup>	
Number of transverse lashing rails		3	3	3	
With longitudinal lashing rails					
Plastic version					
With step-edge protection	11310464.10				

Model	Talento L1-H1	Talento L1-H2	Talento L2-H1	Talento L2-H2	
Model year	2016	2016	2016	2016	
Wheelbase mm	3098	3098	3498	3498	
Without step-edge protection	11320154 <sup>2</sup>	11320484 <sup>2</sup>	11320155 <sup>2</sup>	11320446 <sup>2</sup>	
With step-edge protection	11310154 <sup>2</sup>	11310484 <sup>2</sup>	11310155 <sup>2</sup>	11310446 <sup>2</sup>	
With transverse lashing rails	11312154 <sup>2</sup>	11312484 <sup>2</sup>	11312155 <sup>2</sup>	11312446 <sup>2</sup>	
Number of transverse lashing rails	3	3	4	4	
With longitudinal lashing rails	11321154 <sup>2</sup>	11321484 <sup>2</sup>	11321155 <sup>2</sup>	11321446 <sup>2</sup>	

Model	Ducato L1	Ducato L2	Ducato L3	Ducato L5	
Model year	2006	2006	2006	2006	
Wheelbase mm	3000	3450	4035	4035 *	
Without step-edge protection	11320120	11320121	11320122	11320123	
With step-edge protection	11310120	11310121	11310122	11310123	
With transverse lashing rails	11312120	11312121	11312122	11312123	
Number of transverse lashing rails	3	3	4	5	
With longitudinal lashing rails	11321120	11321121	11321122	11321123	

<sup>1</sup> H1 only <sup>2</sup> Fitting without hold-down cups \*\*Double cab only in combination with hardtop Further versions on request

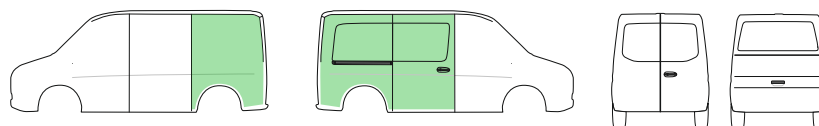
# Interior side lining



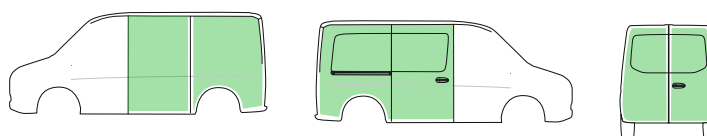
## bott vario protect interior side lining

- Pre-profiled side lining made from recyclable polypropylene
- Twin-wall panels, 4 mm thick, with structured surface on one side
- Colour: light grey (RAL 7035)
- UV-stable, low weight, will not corrode or decay, chemical resistant
- Extremely light and easy to clean
- Fixings included

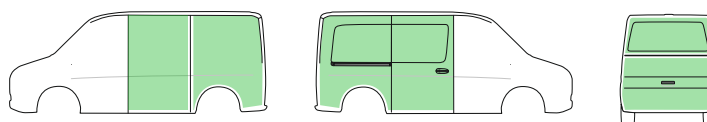
For vehicles with  
**right-hand sliding door**



For vehicles with  
**right-hand sliding door and rear doors**



For vehicles with  
**right-hand sliding door and tailgate**





# Interior side lining

## bott vario protect interior side lining



Model	Fiorino	Doblò L1-H1	Doblò L2-H1	Doblò L1-H2	Doblò L2-H2
Model year	2008	2010	2010	2010	2016
Wheelbase mm	2513	2755	3105	2755	3105
For vehicles with right-hand sliding door and rear doors	12225093.95	12225095.95	12225097.95	12225169.95	12225171.95

Model	Talento L1-H1	Talento L2-H1	Talento L1-H2	Talento L2-H2	
Model year	2016	2016	2016	2016	
Wheelbase mm	3098	3498	3098	3498	
For vehicles with right-hand sliding door	12225206.95	12225209.95			
For vehicles with right-hand sliding door and rear doors	12225207.95	12225210.95	12225299.95	12225300.95	
For vehicles with right-hand sliding door and tailgate	12225208.95	12225211.95			

Model	Ducato L1-H1	Ducato L1-H2 **	Ducato L2-H1	Ducato L2-H2 **	Ducato L3-H2 **
Model year	2006	2006	2006	2006	2006
Wheelbase mm	3000	3000	3450	3450	4035
For vehicles with right-hand sliding door	12225104.95	12225144.95	12225106.95	12225108.95	12225110.95
For vehicles with right-hand sliding door and rear doors	12225105.95	12225145.95	12225107.95	12225109.95	12225111.95

Model	Ducato L3-H3 **	Ducato L5-H2 **	Ducato L5-H3 **		
Model year	2006	2006	2006		
Wheelbase mm	4035	4035 *	4035 *		
For vehicles with right-hand sliding door	12225112.95	12225114.95	12225116.95		
For vehicles with right-hand sliding door and rear doors	12225113.95	12225115.95	12225117.95		

\*with overhang \*\*High roof version with full height side lining  
Order references for vehicles with 2 sliding doors available on request

# Interior side lining

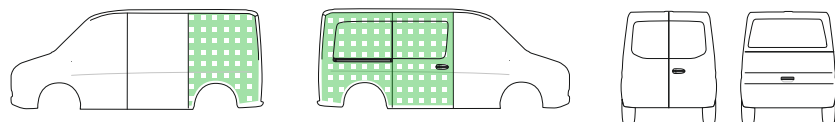


## bott vario protect plus interior side lining

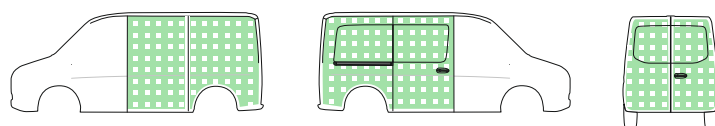
- Pre-profiled side lining made of 1mm thick aluminium
- Light and extremely resilient
- perfo perforated panel for attaching perfo hooks and holders
- Fixings included

Basic interior

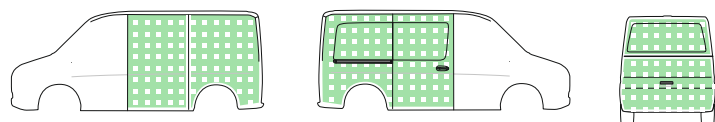
For vehicles with  
**right-hand sliding door**



For vehicles with  
**right-hand sliding door and rear doors**



For vehicles with  
**right-hand sliding door and tailgate**



# Interior side lining

## bott vario protect plus interior side lining



Model	Doblò L1-H1	Doblò L2-H1	Doblò L1-H2	Doblò L2-H2	
Model year	2010	2010	2010	2016	
Wheelbase mm	2755	3105	2755	3105	
For vehicles with right-hand sliding door and rear doors	12225095.98	12225097.98	12225169.98	12225171.98	

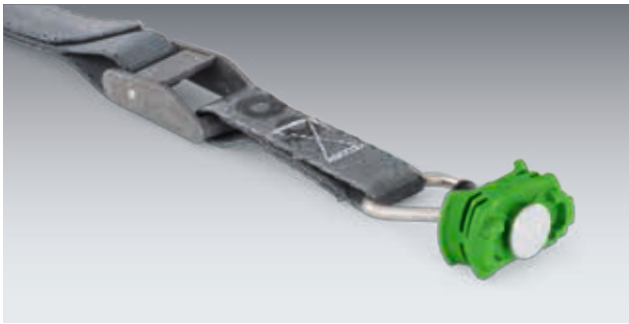
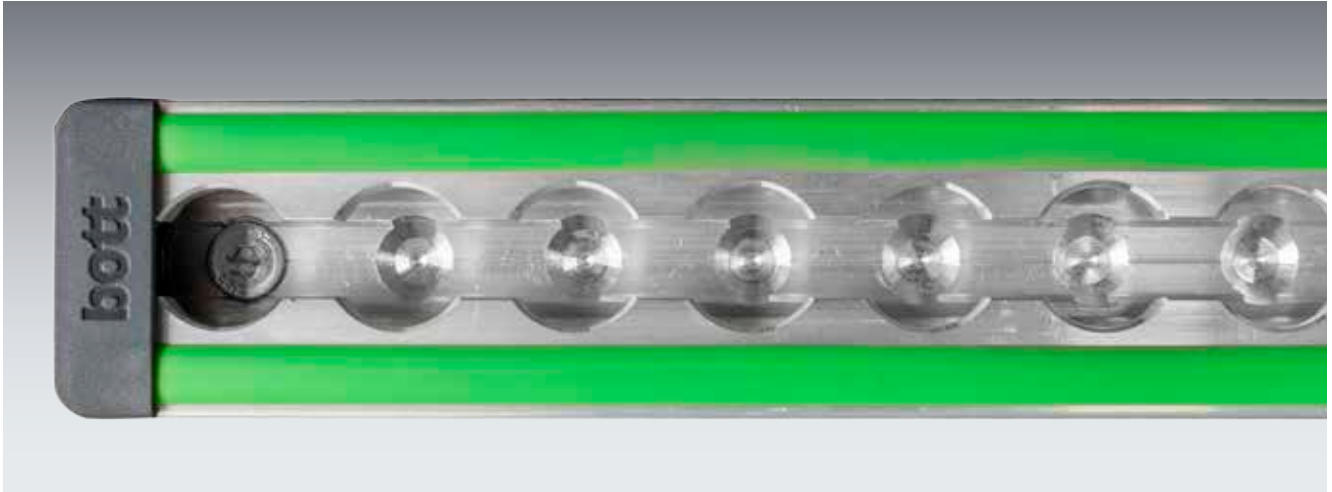
Model	Talento L1-H1	Talento L2-H1	Talento L1-H2	Talento L2-H2	
Model year	2016	2016	2016	2016	
Wheelbase mm	3098	3498	3098	3498	
For vehicles with right-hand sliding door	12225206.98	12225209.98			
For vehicles with right-hand sliding door and rear doors	12225207.98	12225210.98	12225299.98	12225300.98	
For vehicles with right-hand sliding door and tailgate	12225208.98	12225211.98			

Model	Ducato L1-H1	Ducato L1-H2 **	Ducato L2-H1	Ducato L2-H2 **	Ducato L3-H2 **
Model year	2006	2006	2006	2006	2006
Wheelbase mm	3000	3000	3450	3450	4035
For vehicles with right-hand sliding door	12225104.98	12225144.98	12225106.98	12225108.98	12225110.98
For vehicles with right-hand sliding door and rear doors	12225105.98	12225145.98	12225107.98	12225109.98	12225111.98

Model	Ducato L3-H3 **	Ducato L5-H2 **	Ducato L5-H3 **		
Model year	2006	2006	2006		
Wheelbase mm	4035	4035 *	4035 *		
For vehicles with right-hand sliding door	12225112.98	12225114.98	12225116.98		
For vehicles with right-hand sliding door and rear doors	12225113.98	12225115.98	12225117.98		

\*with overhang \*\*High roof version with full height side lining  
Order references for vehicles with 2 sliding doors available on request

# Interior side lining



## Interior side linings with modular wall connection system (rail / prorail)

- bott vario protect interior side linings with integrated lashing rails with Airline profile
- for fixing bott vario in-vehicle equipment or for load restraint with the aid of lashing straps and fittings
- Load is uniformly distributed through the vehicle body shell as the rails are bonded in place
- Lashing rails can remain in the vehicle on removal of racking and represent added value
- Fixings included

### bott vario protect rail

- with central lashing rail



### bott vario protect prorail

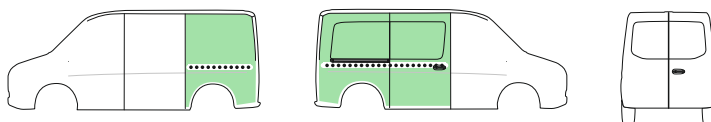
- with central & upper lashing rail



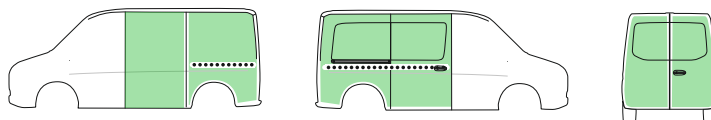
# Interior side lining

## bott vario protect rail interior side lining

For vehicles with  
right-hand sliding door



For vehicles with  
right-hand sliding door and rear doors



Model	Ducato L1-H1	Ducato L1-H2 **	Ducato L2-H1	Ducato L2-H2 **	Ducato L3-H2 **
Model year	2006	2006	2006	2006	2006
Wheelbase mm	3000	3000	3450	3450	4035
For vehicles with right-hand sliding door - with central lashing rail	12220104.95	12220144.95	12220106.95	12220108.95	12220110.95
For vehicles with right-hand sliding door and rear doors with central lashing rail	12220105.95	12220145.95	12220107.95	12220109.95	12220111.95

Model	Ducato L3-H3 **	Ducato L5-H2 **	Ducato L5-H3 **		
Model year	2006	2006	2006		
Wheelbase mm	4035	4035 *	4035 *		
For vehicles with right-hand sliding door - with central lashing rail	12220112.95	12220114.95	12220116.95		
For vehicles with right-hand sliding door and rear doors with central lashing rail	12220113.95	12220115.95	12220117.95		

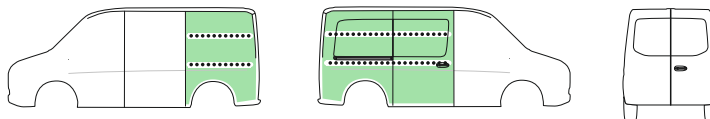
\*with overhang \*\*High roof version with full height side lining  
Order references for vehicles with 2 sliding doors available on request



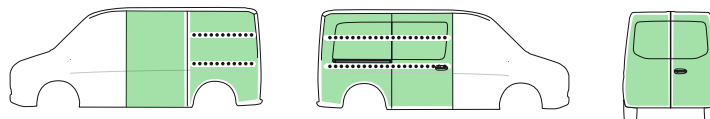
# Interior side lining

## bott vario protect prorail interior side lining

For vehicles with  
right-hand sliding door



For vehicles with  
right-hand sliding door and rear doors



Model	Ducato L1-H1	Ducato L1-H2 **	Ducato L2-H1	Ducato L2-H2 **	Ducato L3-H2 **
Model year	2006	2006	2006	2006	2006
Wheelbase mm	3000	3000	3450	3450	4035
For vehicles with right-hand sliding door - with central and upper lashing rails	12221104.95	12221144.95	12221106.95	12221108.95	12221110.95
For vehicles with right-hand sliding door and rear doors - with central and upper lashing rails	12221105.95	12221145.95	12221107.95	12221109.95	12221111.95

Model	Ducato L3-H3 **	Ducato L5-H2 **	Ducato L5-H3 **		
Model year	2006	2006	2006		
Wheelbase mm	4035	4035 *	4035 *		
For vehicles with right-hand sliding door - with central and upper lashing rails	12221112.95	12221114.95	12221116.95		
For vehicles with right-hand sliding door and rear doors - with central and upper lashing rails	12221113.95	12221115.95	12221117.95		

\*with overhang \*\*High roof version with full height side lining  
Order references for vehicles with 2 sliding doors available on request

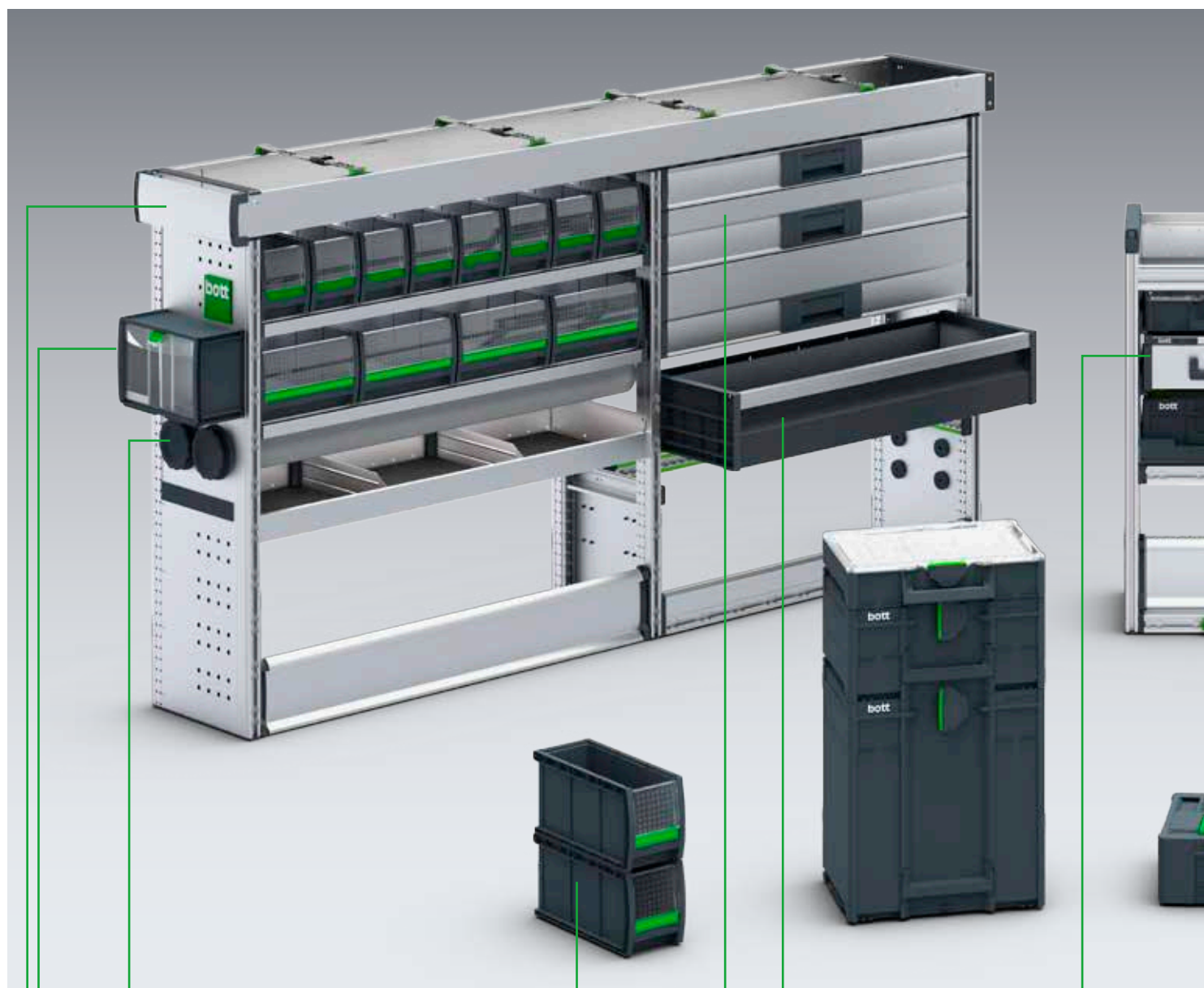
## Interior side lining

**bott**

vario3



## Module features



**Long item holder**  
for easy transport of long  
and heavy tools



**TiltBox**  
for the practical storage of  
small parts and consumables



**Long item top tray**  
for the safe storage of pipes  
and profiles



**varioSlide**  
lightweight drawers with  
generous usable volume



**Drawers**  
with 100% extension telescopic  
slides and 70kg load capacity



**bottBoxes**  
practical material boxes for  
service vehicles and workshops



**bott vario3 V-Box**  
practical storage for small tools and accessories

**Systainer<sup>3</sup>**  
flexible system case in two widths and six heights

**Systainer<sup>3</sup> Organizer**  
practical small parts case compatible with all Systainer<sup>3</sup> products

**varioCase**  
service case made from lightweight aluminium or robust sheet steel

**Rotated drawers**  
can be operated ergonomically from outside the vehicle

**Shelf with C-Lash**  
makes it easy to restrain loads inside the shelves

**Load restraint components**  
throughout the entire van racking design for the safe transport of materials and power tools

# Module packages



Fiat  
Ducato



## Modules for every vehicle size



The bott vario3 van racking modules for your commercial vehicle offer versatile components for dividing the storage space. These can be easily adapted to the individual requirements of your trade. The bott vario3 van racking designers paid particular attention to safety, functionality and to making optimum use of the available space.

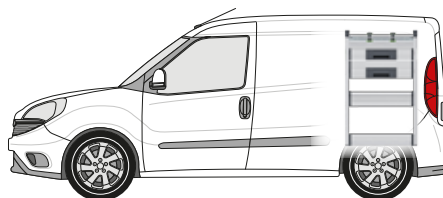
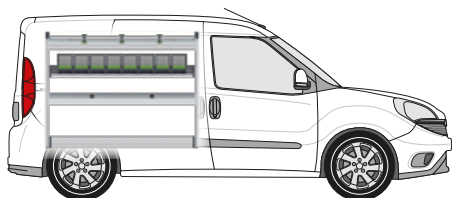
Fiat  
Talento

## Doblò L1-H1

Wheelbase 2755 mm



### bott vario3 Silver Package



#### The left-hand module contains:

- 1 aluminium shelf with anti-slip mat, integrated load restraint (-oo- / -C-) and 3 lashing straps (-C-)
- 1 bottBox shelf with 8 bottBoxes
- 1 aluminium shelf with anti-slip mat and divider
- 1 floor storage compartment with integrated load restraint (-oo-)
- 2 end frames with integrated load restraint (-oo-)

#### The right-hand module contains:

- 1 aluminium shelf with anti-slip mat, integrated load restraint (-oo- / -C-) and 2 lashing straps (-C-)
- 2 heavy duty drawers with anti-slip mats
- 1 drop-front shelf with aluminium drop-front and anti-slip mat
- 1 floor storage compartment with integrated load restraint (-oo-)

<b>Left module W x D x H mm</b>	<b>1262 x 376 x 950</b>
<b>Right module W x D x H mm</b>	<b>590 x 376 x 950</b>
Weight Kg	45.41
<b>Order ref.</b>	<b>70099056.19M</b>
Installation kit	73510067.51V



#### -C- Lash

All types of load restraint that utilise the -C- Lash lashing strap.

#### TopLash -C-

Shelf load restraint.



#### FrontLash -oo-

Horizontal and vertical load restraint at the shelf fronts. Compatible with the Airline system.



#### Accessories included in the package

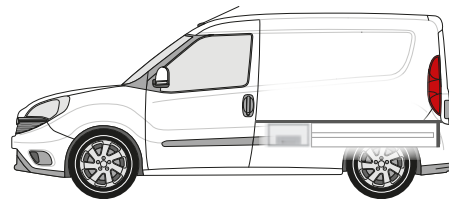
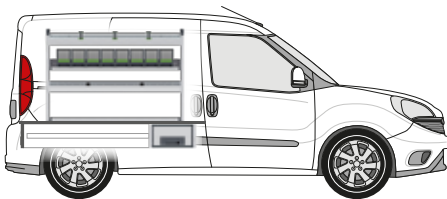
- 1 document holder
- 1 lashing strap with fitting and cam buckle
- 1 TiltBox
- 1 T-slot mounted C-Lash lashing strap

## Doblò L1-H1

Wheelbase 2755 mm



### bott vario3 Green Package



#### The left-hand module contains:

- 1 aluminium shelf with anti-slip mat, integrated load restraint (-oo- / -C-) and 3 lashing straps (-C-)
- 1 bottBox shelf with 8 bottBoxes
- 1 aluminium shelf with anti-slip mat and divider
- 1 floor storage compartment with integrated load restraint (-oo-)
- 2 end frames with integrated load restraint (-oo-)

#### The under floor module contains:

- 3 heavy duty drawers (70 kg) with anti-slip mats
- Height 250 mm
- Free cargo area
- Theft protection, as the stored material is not visible from the outside. Easy use of the sliding and rear door. Large storage space. The under floor module can be ordered separately.

<b>Left module W x D x H mm</b>	<b>1262 x 376 x 850</b>
Weight Kg	92.64
<b>Order ref. incl. Under floor module</b>	<b>70099057.19M</b>
Installation kit	73510067.51V
<b>Order ref. Under floor module</b>	<b>70010002.19V</b>

	<b>-C- Lash</b> All types of load restraint that utilise the -C- Lash lashing strap.	<b>TopLash -C-</b> Shelf load restraint.
		<b>FrontLash -OO-</b> Horizontal and vertical load restraint at the shelf fronts. Compatible with the Airline system.



#### Accessories included in the package

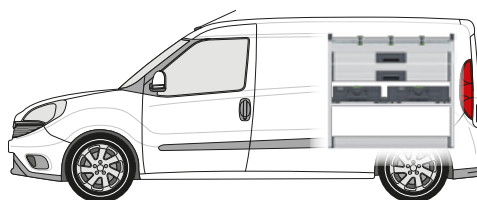
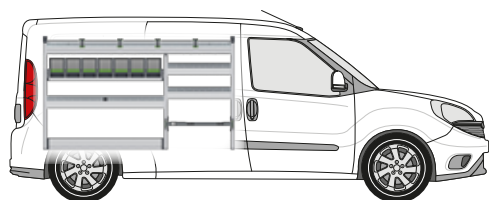
- 1 document holder
- 1 lashing strap with fitting and cam buckle
- 1 TiltBox
- 1 T-slot mounted C-Lash lashing strap

## Doblò L2-H1

Wheelbase 3105 mm



### bott vario3 Silver Package



#### The left-hand module contains:

- 1 aluminium shelf with anti-slip mat, integrated load restraint (-oo- / -C-) and 4 lashing straps (-C-)
- 1 bottBox shelf with 7 bottBoxes
- 3 aluminium shelves with anti-slip mats and dividers
- 1 floor storage compartment with integrated load restraint (-oo-)
- 1 floor storage compartment with cam-buckle strap (-C-)
- 3 end frames with integrated load restraint (-oo-)

#### The right-hand module contains:

- 1 aluminium shelf with anti-slip mat, integrated load restraint (-oo- / -C-) and 3 lashing straps (-C-)
- 2 heavy duty drawers with anti-slip mats
- 1 case support beam with 1 Systainer<sup>3</sup> M 187 and 1 Systainer<sup>3</sup> L 187
- 1 floor storage compartment with integrated load restraint (-oo-)

<b>Left module W x D x H mm</b>	<b>1598 x 376 x 950</b>
<b>Right module W x D x H mm</b>	<b>1038 x 376 x 950</b>
Weight Kg	53.80
<b>Order ref.</b>	<b>70099058.19M</b>
Installation kit	73510067.51V

	<b>-C- Lash</b> All types of load restraint that utilise the -C- Lash lashing strap.	<b>TopLash -C-</b> Shelf load restraint.
		<b>FrontLash -OO-</b> Horizontal and vertical load restraint at the shelf fronts. Compatible with the Airline system.



#### Accessories included in the package

- 1 document holder
- 1 lashing strap with fitting and cam buckle
- 1 TiltBox
- 1 T-slot mounted C-Lash lashing strap

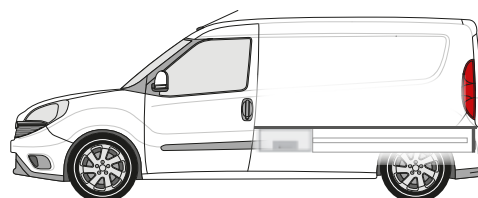
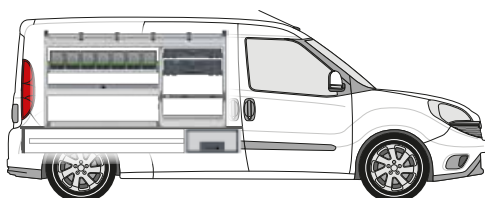


## Doblò L2-H1

Wheelbase 3105 mm



### bott vario3 Green Package



#### The left-hand module contains:

- 1 aluminium shelf with anti-slip mat, integrated load restraint (-oo- / -C-) and 4 lashing straps (-C-)
- 1 bottBox shelf with 7 bottBoxes
- 1 aluminium shelf with anti-slip mat and divider
- 1 Systainer<sup>3</sup> Organizer L 89 with 13 boxes
- 1 Systainer<sup>3</sup> L 137
- 1 floor storage compartment with integrated load restraint (-oo-)
- 1 floor storage compartment with aluminium shelf and cam-buckle strap (-C-)
- 3 end frames with integrated load restraint (-oo-)

#### The under floor module contains:

- 3 heavy duty drawers (70 kg) with anti-slip mats
- Height 250 mm
- Free cargo area
- Theft protection, as the stored material is not visible from the outside. Easy use of the sliding and rear door. Large storage space. The under floor module can be ordered separately.

<b>Left module W x D x H mm</b>	<b>1598 x 376 x 850</b>
Weight Kg	99.15
<b>Order ref. incl. Under floor module</b>	<b>70099059.19M</b>
Installation kit	73510067.51V
<b>Order ref. Under floor module</b>	<b>70010003.19V</b>

	<b>-C- Lash</b> All types of load restraint that utilise the -C- Lash lashing strap.	<b>TopLash -C-</b> Shelf load restraint.
		<b>FrontLash -OO-</b> Horizontal and vertical load restraint at the shelf fronts. Compatible with the Airline system.



#### Accessories included in the package

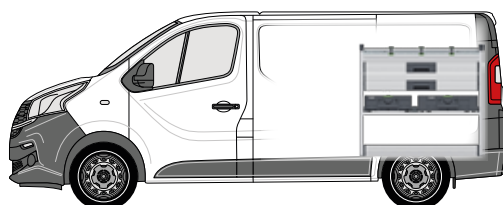
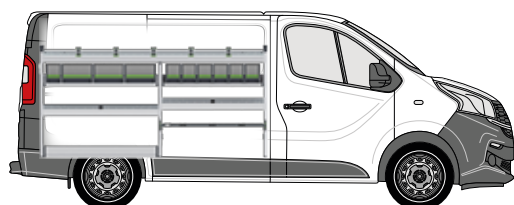
- 1 document holder
- 1 lashing strap with fitting and cam buckle
- 1 TiltBox
- 1 T-slot mounted C-Lash lashing strap

## Talento L1-H1

Wheelbase 3098 mm



### bott vario3 Silver Package



#### The left-hand module contains:

- 1 aluminium shelf with anti-slip mat, integrated load restraint (-C-) and 5 lashing straps (-C-)
- 2 bottBox shelves with 10 bottBoxes
- 2 aluminium shelves with anti-slip mats and dividers
- 1 floor storage compartment with integrated load restraint (-oo-)
- 1 floor storage compartment with cam-buckle strap (-C-)
- 2 end frames with integrated load restraint (-oo-)

#### The right-hand module contains:

- 1 aluminium shelf with anti-slip mat, integrated load restraint (-C-) and 3 lashing straps (-C-)
- 2 heavy duty drawers with anti-slip mats
- 1 case support beam with 1 Systainer<sup>3</sup> M 187 and 1 Systainer<sup>3</sup> L 187
- 1 floor storage compartment with integrated load restraint (-oo-)

<b>Left module W x D x H mm</b>	<b>1934 x 376 x 950</b>
<b>Right module W x D x H mm</b>	<b>1038 x 376 x 950</b>
Weight Kg	59.64
<b>Order ref.</b>	<b>70099001.19M</b>
Installation kit	73510067.51V



#### -C- Lash

All types of load restraint that utilise the -C- Lash lashing strap.

#### TopLash -C-

Shelf load restraint.



#### FrontLash -OO-

Horizontal and vertical load restraint at the shelf fronts. Compatible with the Airline system.



#### Accessories included in the package

- 1 document holder
- 1 lashing strap with fitting and cam buckle
- 1 TiltBox
- 1 T-slot mounted C-Lash lashing strap

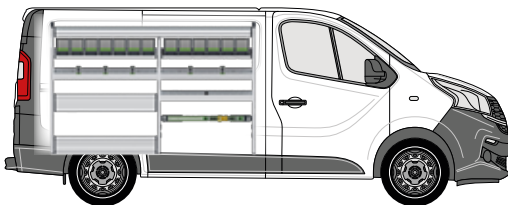


## Talento L1-H1

Wheelbase 3098 mm

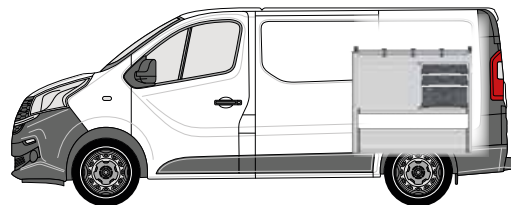


### bott vario3 Green Package



#### The left-hand module contains:



- 2 drop-front shelves with aluminium drop-fronts and anti-slip mats
- 2 bottBox shelves with 13 bottBoxes
- 2 aluminium shelves with anti-slip mats, integrated load restraint (-oo- / -C-) and 5 lashing straps (-C-)
- 1 aluminium shelf with anti-slip mat and divider
- 1 floor storage compartment with integrated load restraint (-oo-) and aluminium drop-front
- 1 load restraint kit with lashing strap (-oo-)
- 3 end frames with integrated load restraint (-oo-)



#### The right-hand module contains:

- 1 aluminium shelf with anti-slip mat, integrated load restraint (-oo- / -C-) and 3 lashing straps (-C-)
- 3 heavy duty drawers with anti-slip mats
- 2 Systainer<sup>3</sup> Organizer M 89 with 12 boxes each
- 1 Systainer<sup>3</sup> M 187
- 1 floor storage compartment with integrated load restraint (-oo-) and 2 aluminium drop-fronts

<b>Left module W x D x H mm</b>	<b>1934 x 376 x 1250</b>
<b>Right module W x D x H mm</b>	<b>1038 x 376 x 950</b>
Weight Kg	82.74
<b>Order ref.</b>	<b>70099060.19M</b>
Installation kit	73510067.51V

	<b>-C- Lash</b> All types of load restraint that utilise the -C- Lash lashing strap.	<b>TopLash -C-</b> Shelf load restraint.
	<b>FrontLash -OO-</b> Horizontal and vertical load restraint at the shelf fronts. Compatible with the Airline system.	



#### Accessories included in the package

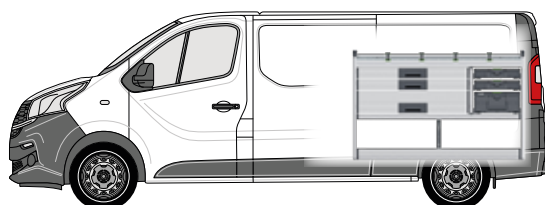
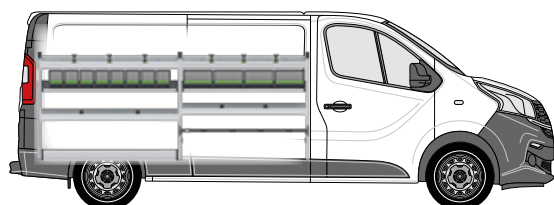
- 1 document holder
- 1 lashing strap with fitting and cam buckle
- 1 TiltBox
- 1 T-slot mounted C-Lash lashing strap

## Talento L2-H1

Wheelbase  
3498 mm



### bott vario3 Silver Package



#### The left-hand module contains:

- 2 aluminium shelves with anti-slip mats, integrated load restraint (-C-) and 6 lashing straps (-C-)
- 2 bottBox shelves with 12 bottBoxes
- 2 aluminium shelves with anti-slip mats and dividers
- 1 floor storage compartment with integrated load restraint (-oo-)
- 1 floor storage compartment with cam-buckle strap (-C-)
- 2 end frames with integrated load restraint (-oo-)

#### The right-hand module contains:

- 1 aluminium shelf with anti-slip mat, integrated load restraint (-C-) and 4 lashing straps (-C-)
- 3 heavy duty drawers with anti-slip mats
- 2 Systainer<sup>3</sup> Organizer M 89 with 12 boxes each
- 1 Systainer<sup>3</sup> M 187
- 1 floor storage compartment with integrated load restraint (-oo-)

<b>Left module W x D x H mm</b>	<b>2382 x 376 x 950</b>
<b>Right module W x D x H mm</b>	<b>1486 x 376 x 950</b>
Weight Kg	77.68
<b>Order ref.</b>	<b>70099003.19M</b>
Installation kit	73510067.51V



#### -C- Lash

All types of load restraint that utilise the -C- Lash lashing strap.

#### TopLash -C-

Shelf load restraint.



#### FrontLash -OO-

Horizontal and vertical load restraint at the shelf fronts. Compatible with the Airline system.



#### Accessories included in the package

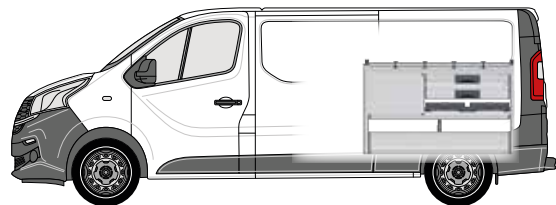
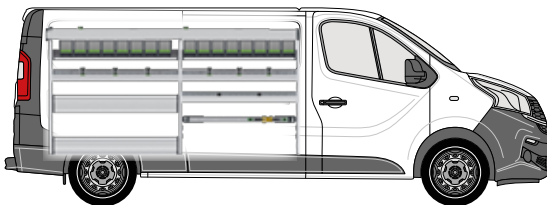
- 1 document holder
- 1 lashing strap with fitting and cam buckle
- 1 TiltBox
- 1 T-slot mounted C-Lash lashing strap

## Talento L2-H1

Wheelbase  
3498 mm



### bott vario3 Green Package



#### The left-hand module contains:

- 1 aluminium long item top tray with anti-slip mat
- 2 bottBox shelves with 16 bottBoxes
- 2 aluminium shelves with anti-slip mats, integrated load restraint (-oo- / -C-) and 6 lashing straps (-C-)
- 1 drop-front shelf with aluminium drop-front and anti-slip mat
- 1 aluminium shelf with anti-slip mat and divider
- 1 floor storage compartment with integrated load restraint (-oo-) and aluminium drop-front
- 1 load restraint kit with lashing strap (-oo-)
- 3 end frames with integrated load restraint (-oo-)

<b>Left module W x D x H mm</b>	<b>2382 x 376 x 1200</b>
<b>Right module W x D x H mm</b>	<b>1486 x 376 x 950</b>
Weight Kg	104.02
<b>Order ref.</b>	<b>70099061.19M</b>
Installation kit	73510067.51V

#### The right-hand module contains:

- 1 aluminium shelf with anti-slip mat, integrated load restraint (-oo- / -C-) and 4 lashing straps (-C-)
- 5 heavy duty drawers with anti-slip mats
- 2 Systainer<sup>3</sup> Organizer M 89 with 12 boxes each
- 1 floor storage compartment with integrated load restraint (-oo-) and 2 aluminium drop-fronts



**-C- Lash**  
All types of load restraint that utilise the -C- Lash lashing strap.

**TopLash -C-**  
Shelf load restraint.



**FrontLash -OO-**  
Horizontal and vertical load restraint at the shelf fronts. Compatible with the Airline system.



#### Accessories included in the package

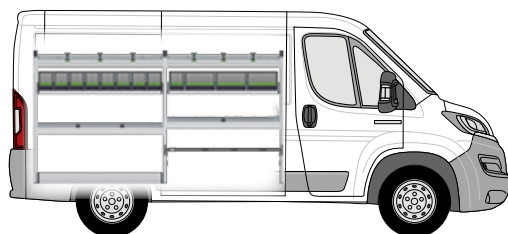
- 1 document holder
- 1 lashing strap with fitting and cam buckle
- 1 TiltBox
- 1 T-slot mounted C-Lash lashing strap

## Ducato L1-H1

Wheelbase  
3000 mm



### bott vario3 Silver Package



#### The left-hand module contains:

- 2 aluminium shelves with anti-slip mats, integrated load restraint (-C-) and 6 lashing straps (-C-)
- 2 bottBox shelves with 12 bottBoxes
- 2 aluminium shelves with anti-slip mats and dividers
- 1 floor storage compartment with integrated load restraint (-oo-)
- 1 floor storage compartment with cam-buckle strap (-C-)
- 2 end frames with integrated load restraint (-oo-)



#### The right-hand module contains:

- 1 aluminium shelf with anti-slip mat, integrated load restraint (-C-) and 3 lashing straps (-C-)
- 2 heavy duty drawers with anti-slip mats
- 1 case support beam set with 2 Systainer<sup>3</sup> L 187
- 1 floor storage compartment with integrated load restraint (-oo-)

Left module W x D x H mm	2158 x 376 x 1150
Right module W x D x H mm	1150 x 376 x 1050
Weight Kg	67.06
Order ref.	70099041.19M
Installation kit	73510067.51V

	<b>-C- Lash</b> All types of load restraint that utilise the -C- Lash lashing strap.	<b>TopLash -C-</b> Shelf load restraint.
		<b>FrontLash -OO-</b> Horizontal and vertical load restraint at the shelf fronts. Compatible with the Airline system.



#### Accessories included in the package

- 1 document holder
- 1 lashing strap with fitting and cam buckle
- 1 TiltBox
- 1 T-slot mounted C-Lash lashing strap



## Ducato L1-H1

Wheelbase  
3000 mm

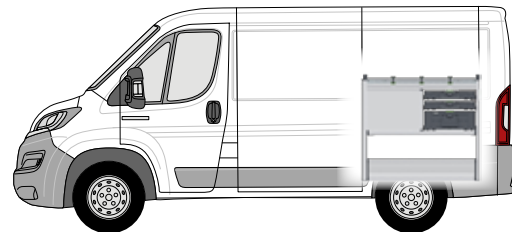


### bott vario3 Green Package



#### The left-hand module contains:

- 3 bottBox shelves with 19 bottBoxes
- 2 aluminium shelves with anti-slip mats, integrated load restraint (-oo- / -C-) and 6 lashing straps (-C-)
- 1 drop-front shelf with aluminium drop-front and anti-slip mat
- 2 aluminium shelves with anti-slip mats and dividers
- 1 floor storage compartment with integrated load restraint (-oo-) and aluminium drop-front
- 1 load restraint kit with lashing strap (-oo-)
- 3 end frames with integrated load restraint (-oo-)



#### The right-hand module contains:

- 1 aluminium shelf with anti-slip mat, integrated load restraint (-oo- / -C-) and 3 lashing straps (-C-)
- 3 heavy duty drawers with anti-slip mats
- 2 Systainer<sup>3</sup> Organizer L 89 with 13 boxes each
- 1 Systainer<sup>3</sup> L 187
- 1 floor storage compartment with integrated load restraint (-oo-) and 2 aluminium drop-fronts

<b>Left module W x D x H mm</b>	<b>2158 x 376 x 1650</b>
<b>Right module W x D x H mm</b>	<b>1150 x 488 x 1050</b>
Weight Kg	99.54
<b>Order ref.</b>	<b>70099042.19M</b>
Installation kit	73510067.51V

	<b>-C- Lash</b> All types of load restraint that utilise the -C- Lash lashing strap.	<b>TopLash -C-</b> Shelf load restraint.
		<b>FrontLash -OO-</b> Horizontal and vertical load restraint at the shelf fronts. Compatible with the Airline system.



#### Accessories included in the package

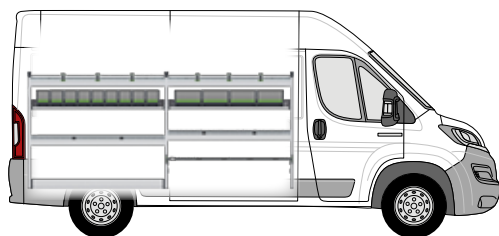
- 1 document holder
- 1 lashing strap with fitting and cam buckle
- 1 TiltBox
- 1 T-slot mounted C-Lash lashing strap

## Ducato L2-H2

Wheelbase  
3450 mm

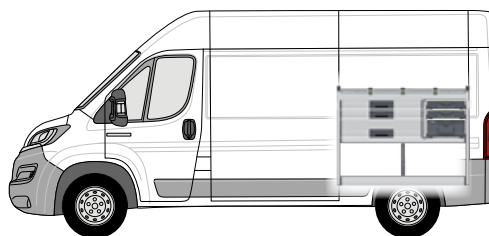


### bott vario3 Silver Package



#### The left-hand module contains:

- 2 aluminium shelves with anti-slip mats, integrated load restraint (-C-) and 6 lashing straps (-C-)
- 2 bottBox shelves with 13 bottBoxes
- 2 aluminium shelves with anti-slip mats and dividers
- 1 floor storage compartment with integrated load restraint (-oo-)
- 1 floor storage compartment with cam-buckle strap (-C-)
- 2 end frames with integrated load restraint (-oo-)



#### The right-hand module contains:

- 1 aluminium shelf with anti-slip mat, integrated load restraint (-C-) and 3 lashing straps (-C-)
- 3 heavy duty drawers with anti-slip mats
- 2 Systainer<sup>3</sup> Organizer M 89 with 12 boxes each
- 1 Systainer<sup>3</sup> M 187
- 1 floor storage compartment with integrated load restraint (-oo-)

<b>Left module W x D x H mm</b>	<b>2606 x 376 x 1150</b>
<b>Right module W x D x H mm</b>	<b>1374 x 376 x 1050</b>
Weight Kg	81.30
<b>Order ref.</b>	<b>70099043.19M</b>
Installation kit	73510067.51V



**-C- Lash**  
All types of load restraint that utilise the -C- Lash lashing strap.

**TopLash -C-**  
Shelf load restraint.



**FrontLash -OO-**  
Horizontal and vertical load restraint at the shelf fronts. Compatible with the Airline system.



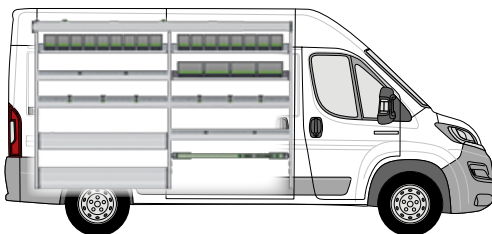
#### Accessories included in the package

- 1 document holder
- 1 lashing strap with fitting and cam buckle
- 1 TiltBox
- 1 T-slot mounted C-Lash lashing strap



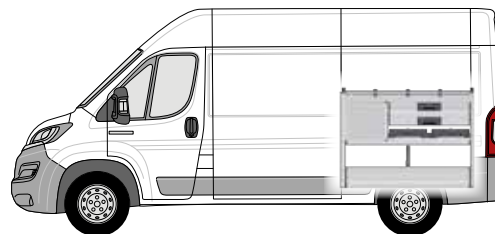


### bott vario3 Green Package



#### The left-hand module contains:



- 1 aluminium long item top tray with anti-slip mat
- 3 bottBox shelves with 21 bottBoxes
- 2 aluminium shelves with anti-slip mats, integrated load restraint (-oo- / -C-) and 6 lashing straps (-C-)
- 1 drop-front shelf with aluminium drop-front and anti-slip mat
- 2 aluminium shelves with anti-slip mats and dividers
- 1 floor storage compartment with integrated load restraint (-oo-) and aluminium drop-front
- 1 load restraint kit with lashing strap (-oo-)
- 3 end frames with integrated load restraint (-oo-)



#### The right-hand module contains:

- 1 aluminium shelf with anti-slip mat, integrated load restraint (-oo- / -C-) and 3 lashing straps (-C-)
- 5 heavy duty drawers with anti-slip mats
- 2 Systainer<sup>3</sup> Organizer M 89 with 12 boxes each
- 1 floor storage compartment with integrated load restraint (-oo-) and 2 aluminium drop-fronts

<b>Left module W x D x H mm</b>	<b>2606 x 376 x 1700</b>
<b>Right module W x D x H mm</b>	<b>1374 x 488 x 1050</b>
Weight Kg	121.56
<b>Order ref.</b>	<b>70099044.19M</b>
Installation kit	73510067.51V

	<b>-C- Lash</b> All types of load restraint that utilise the -C- Lash lashing strap.	<b>TopLash -C-</b> Shelf load restraint.
	<b>FrontLash -oo-</b> Horizontal and vertical load restraint at the shelf fronts. Compatible with the Airline system.	



#### Accessories included in the package

- 1 document holder
- 1 lashing strap with fitting and cam buckle
- 1 TiltBox
- 1 T-slot mounted C-Lash lashing strap

# Roof rack systems

Maximum  
storage space

Light

Stable and secure

Weatherproof aluminium



## Light, stable and secure

You'll find the most suitable load support system among our product range. Our roof rack systems are light, stable and secure. They offer maximum storage space on the vehicle roof and are efficient and durable. The aerodynamic components made of anodised aluminium minimise air resistance and wind noise.

With our varied range of accessories you can extend the roof rack system according to your needs, for example with a ladder lift for ergonomical and convenient ladder storage. The bott ladder lifts are suitable for quick, simple and safe loading and unloading of the ladders secured on the vehicle roof.

# Roof rack systems

## Basic roof rack



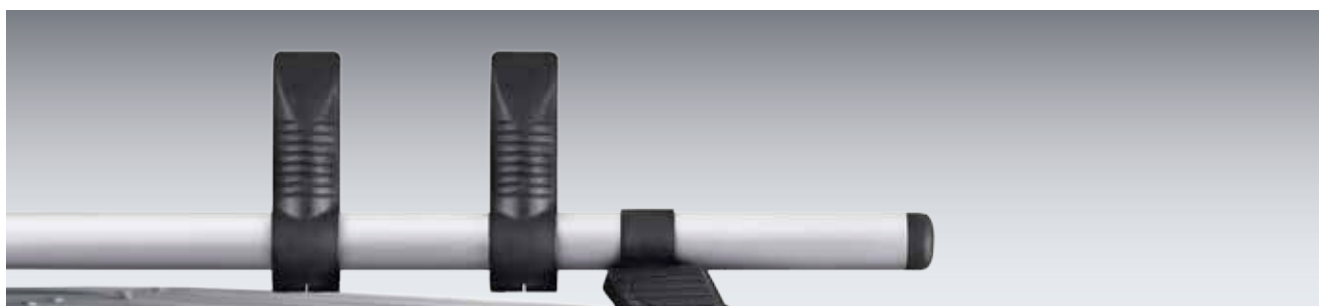
Model	Doblo	Doblo	Talento	Talento	Talento
Year of construction	2010	2010	2016	2016	2016
Wheelbase mm	2755/3105	2755/3105	3098/3498	3098/3498	3098/3498
Vehicle length	All	All	All	All	All
Vehicle height	H1	H1	H1	H1	H1
Rear access	All	All	All	All	All
Number of roof bars	2x	3x	2x	3x	4x
Order ref.	35001001	35001002	35001076	35001077	35001078

Model	Talento	Talento	Talento	Ducato	Ducato
Year of construction	2016	2016	2016	2006	2006
Wheelbase mm	3098/3498	3098/3498	3098/3498	3000/3450/4035/4035L	3000/3450/4035/4035L
Vehicle length	All	All	All	All	All
Vehicle height	H2	H2	H2	H1/H2/H3	H1/H2/H3
Rear access	All	All	All	Double doors	Double doors
Number of roof bars	2x	3x	4x	2x	3x
Order ref.	35001079	35001080	35001081	35001017	35001018

Model	Ducato				
Year of construction	2006				
Wheelbase mm	3000/3450/4035/4035L				
Vehicle length	All				
Vehicle height	H1/H2/H3				
Rear access	Double doors				
Number of roof bars	4x				
Order ref.	35001019				

# Roof rack systems

## Load stops



- For fitting to a roof bar in a basic roof rack with 3 or 4 roof bars

Pack quantity (pieces)	2
Order ref.	35002034

## Rear loading roller - suitable for basic roof racks



Model	Doblo	Talento	Talento	Talento	Ducato
Year of construction from	2010	2016	2016	2016	2006
Wheelbase mm	2755/3105	3098/3498	3098/3498	3098/3498	3000/3450/4035/4035L
Vehicle length	All	All	All	All	All
Vehicle height	H1	H1	H1	H2	H1/H2/H3
Rear	Double doors	Double doors	Tailgate	Double doors	Double doors
Order ref.	35002024	35002028	35002025	35002026	35002028

# Roof rack systems

## Aluminium storage tube for long items



- Lockable and puncture-resistant steel insert at both ends
- Max. load capacity: 50 kg
- Made of powder-coated aluminium

Version for	Pipes up to 2 m	Pipes up to 3 m
Order ref.	35002021	35002022



*„I have to reach new heights every day. Ladders are a piece of essential equipment for me. I can fasten them securely to the roof of my van. Bott's practical loading aid makes them easy to load and unload.“*





# Roof rack systems

## Modular roof rack



Model	Doblo	Doblo	Talento	Talento	Talento
Year of construction from	2010	2010	2016	2016	2016
Wheelbase mm	2755	3105	3098	3098	3498
Vehicle length	L1	L2	L1	L1	L2
Vehicle height	H1	H1	H1	H1	H1
Rear access	Double doors	Double doors	Double doors	Tailgate	Double doors
Modular roof rack	1,25 x 2,0 m	1,25 x 2,4 m	1,60 x 2,8 m	1,60 x 2,6 m	1,60 x 3,2 m
Order ref.	<b>35001003</b>	<b>35001004</b>	<b>35001082</b>	<b>35001083</b>	<b>35001084</b>

Model	Talento	Talento	Talento	Ducato	Ducato
Year of construction from	2016	2016	2016	2006	2006
Wheelbase mm	3498	3098	3498	3000	3450
Vehicle length	L2	L1	L2	L1	L2
Vehicle height	H1	H2	H2	H1	H1
Rear access	Tailgate	Double doors	Double doors	Double doors	Double doors
Modular roof rack	1,60 x 3,0 m	1,40 x 2,2 m	1,40 x 2,6 m	1,80 x 3,2 m	1,80 x 3,4 m
Order ref.	<b>35001085</b>	<b>35001086</b>	<b>35001087</b>	<b>35001020</b>	<b>35001021</b>

Model	Ducato	Ducato	Ducato	Ducato	
Year of construction from	2006	2006	2006	2006	
Wheelbase mm	3450	4035	4035L	4035L	
Vehicle length	L2	L4	L5	L5	
Vehicle height	H2	H2	H2	H3	
Rear access	Double doors	Double doors	Double doors	Double doors	
Modular roof rack	1,80 x 3,2 m	1,80 x 3,8 m	1,80 x 4,2 m	1,60 x 4,2 m	
Order ref.	<b>35001022</b>	<b>35001023</b>	<b>35001024</b>	<b>35001025</b>	

# Load restraint

Load restraint made easy

Safety for driver and load

Always legally compliant



## Safe on the road

All system components of the bott vario3 in-vehicle equipment range offer innovative possibilities for simple load restraint. Therefore all material and equipment is safely stored, either with the tried-and-tested airline lashing rails or with our new C-Lash fixing, which enables particularly simple handling. C-Lash is so flexible that you can use minute adjustments to attach the lashing straps to our unique aluminium profiles.

That's how you can secure your load and equipment in any driving conditions, even when you're on bad roads. Within our wide product range you'll find the right type of load restraint for any application you could wish for.

# Load restraint

## Lashing rails with protective profile



- Contact surface with anti-abrasion strips, ideal for transporting goods with sensitive surfaces
- For straps with fitting
- Width 46 mm
- Strap attachment points every 25 mm
- Load bearing capacity up to 500 daN (depending on the type of fixing)
- Includes end caps
- The green protective profile can be replaced by LED strips
- End cap lashing rail: 85001138.19V

Rail length mm	1000	1500	2000	3000	linear metre
Order ref.	67901014.98V	67901015.98V	67901016.98V	67901017.98V	67901018.98V

## Load-securing case for vehicles with lashing rails



- Ideal for vehicles with bott vario3 in-vehicle equipment with integrated lashing points and/or lashing rails
- The use of lashing straps with fittings allows transported goods to be secured in a fast and reliable way using the lashing points or lashing rails of the vehicle
- Set consisting of:
  - 1x Systainer<sup>3</sup> Organizer M 89
  - 2 x lashing strap 3.5 m with fitting and cam buckle
  - 2 x lashing strap 3.5 m with fitting and ratchet
  - 6x load restraint pad
  - 6x strap protection pad
- including important information on load restraint

Dimensions W x D x H mm	396 x 296 x 89
Order ref.	72610038.19V

## Ratchet strap with fitting

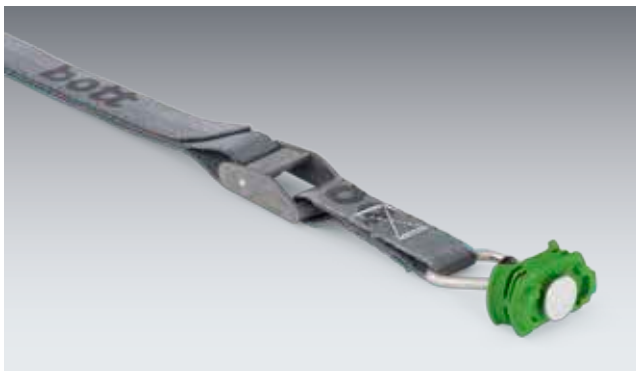


- bott branded strap in anthracite grey
- Suitable for lashing rails
- Strap width 25 mm



Strap length mm	1000	2500	3000	3500	5000	2500
Fixed end mm	130	130	130	500	500	500
Load capacity daN	500	500	400	500	500	500
Order ref.	62626005.19V	62626006.19V	62626069.19V	62626007.19V	62626008.19V	62626049.19V

## Ratchet strap with fitting and cam-buckle



- bott branded strap in anthracite grey
- Suitable for lashing rails
- Strap width 25 mm

Strap length mm	1000	2500	2500	3500	5000
Fixed end mm	130	130	500	500	500
Load capacity daN	150	150	150	150	150
Order ref.	62626009.19V	62626010.19V	62626050.19V	62626011.19V	62626012.19V



# Load restraint

## Load-securing net



- Close-meshed knitted load-securing net
- Tested according to VDI 2700
- Mesh width 45 x 45 mm
- Load capacity up to 400 daN
- Cam-buckle strap around circumference

Version	4x hook	4x fitting	4x hook	4x fitting
Dimensions W x D mm	1250 x 730	1250 x 730	2290 x 1500	2290 x 1500
Order ref.	62627006.19V	62627007.19V	62627008.19V	62627009.19V

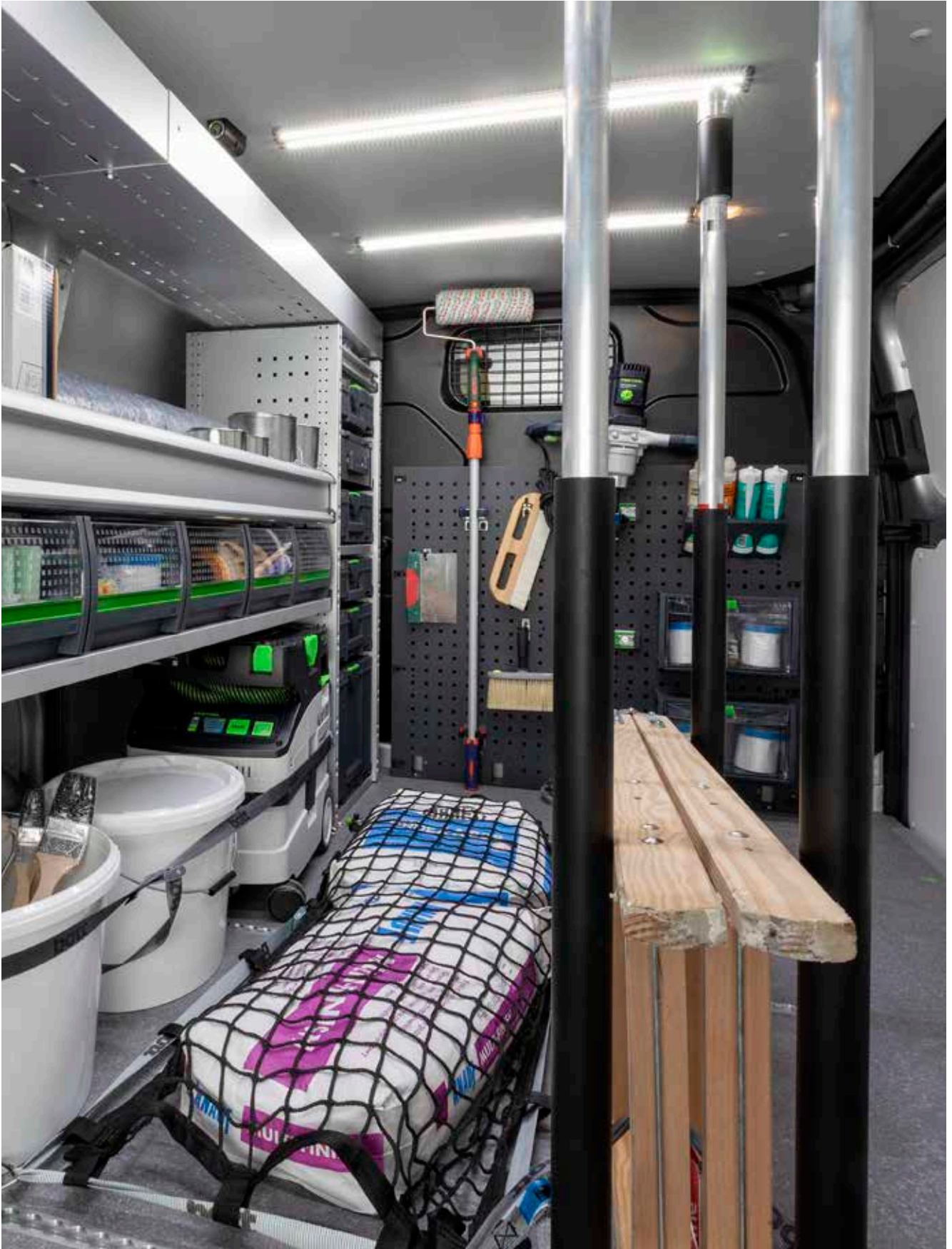
## Load-restraint blanket



- For securing the load in the vehicle and on the flatbed
- Anti-theft protection thanks to the opaque fabric
- Tested according to VDI 2700
- Load capacity up to 200 daN
- Colour: anthracite grey

Version	4x cam buckle strap with flat hook ends	4x cam buckle strap with fitting	6x cam buckle strap with flat hook ends	6x cam buckle with fitting
Dimensions W x D mm	1250 x 730	1250 x 730	2290 x 1500	2290 x 1500
Order ref.	62627010.19V	62627011.19V	62627012.19V	62627013.19V

## Load restraint



# Load restraint

## Shovel and tool holder for the rear doors



- Can be used for light parts such as aluminium ladders, brooms, shovels and other tools
- Rear panel with perfo perforation
- Load fixed in place using 10 perfo hooks and 2 rubber straps
- Includes 2 height-adjustable mounting profiles for mounting the shovel holder to the vehicle door (only included with highroof versions)

Dimensions W x D x H mm	500 x 240 x 1500
Order ref.	63502048.97V

## Snap fastener



- For fast and secure mounting of small and long parts
- Material: Zinc-plated steel
- Tensioning strap: Plastic, black

Dimensions W x D x H mm	150 x 40 x 40	150 x 40 x 40
Order ref.	63003041.51V	63003042.51V

## Ladder holder, 3-piece



- 3-piece, for single and double ladders
- Attaches to vehicle roof spar by means of a central folding mechanism
- Colour: anthracite grey (RAL 7016)



Version	Suitable for use with ladder spars from 70 to 100 mm	Suitable for use with ladder spars from 130 to 160 mm
Dimensions W x D x H mm	46 x 300 x 130	46 x 300 x 130
Order ref.	63003083.19V	63003084.19V



# Load restraint

## Holder for plate compactor with lashing strap



- For secure transportation of plate compactors in vans or on a flatbed
- Will accommodate a plate size of WxD: 280 x 330-350 mm
- Handle height is adjustable
- Incl. lashing strap



Dimensions W x D x H mm	315 x 560 x 930
Order ref.	07002234.19

## Height-adjustable shoring pole



- Used to secure large items in transit
- Telescopic bar can be shortened or extended quickly without tools
- 4 different sizes available, each with a different adjustment range
- Guide value: Blocking capacity BC x 4 = max. permitted load weight for rear load restraint
- Starting from length 1550 mm with circumferential rubber coating, in the lower area, for increased slip-resistance as well as additional protection for the load



Shoring pole length mm	650-900	1050-1550	1550-2050	2000-2500
Blocking capacity BC daN	300	300	300	160
Order ref.	85001041	85001039	85001013	85001040



## Shoring pole plus



- Used to secure large items in transit
- Telescopic bar can be shortened or extended quickly without tools
- Simple operation by means of Click Lock when inserting.
- Shoring pole is not spring loaded so there is never any clamping force applied to the roof or the side wall
- Suitable for horizontal and vertical applications
- Equal contact area across the entire length
- Continuous, uniform diameter of the clamping bar that always ensures flat contact surface with transported goods
- Circumferential rubber coating for increased slip-resistance as well as additional protection for the load.

Shoring pole length mm	650-800	800-1000	1000-1400	1400-2050	1700-2500
Blocking capacity BC daN	450-300	450-300	350-250	300-150	300-100
Order ref.	85001118	85001119	85001120	85001121	85001122

## Shoring pole holder set



- For secure and spacesaving storage of 2 to 4 shoring poles
- Suitable for both versions of the shoring pole
- For mounting onto the lashing rails on the vehicle side wall or in the roof area
- Powder coated sheet steel
- Colour: anthracite grey (RAL 7016)

Version	for 2 shoring poles	for 4 shoring poles
Dimensions W x D x H mm	85 x 75 x 120	85 x 75 x 270
Order ref.	63003086.19	63003087.19

# Load restraint

## Load-securing mat



- For securing loaded goods
- Coefficient of friction in line with VDI guideline 2700 (DEKRA test certificate supplied)
- Flame resistant (fire class BflS1 in accordance with EN 13501)
- Antislip, dimensionally stable, tear resistant, durable, waterproof, oil and fat resistant, washable up to 60°C
- Colour: anthracite grey (RAL 7016)
- Optionally available with anodised aluminium storage pocket (114 x 114 x 500 mm)

Version	incl. holder	-	incl. holder	-
Dimensions W x D x H mm	620 x 820 x 5	620 x 820 x 5	1220 x 820 x 5	1220 x 820 x 5
Order ref.	61302001.19V	61302002.19V	61302003.19V	61302004.19V

## Load restraining pad



- Load restraining pad for securing loaded goods
- Coefficient of friction in line with VDI guideline 2700 (DEKRA test certificate supplied)
- Flame resistant (fire class BflS1 in accordance with EN 13501)
- Antislip, dimensionally stable, tear resistant, durable, waterproof, oil and fat resistant, washable up to 60°C
- Colour: anthracite grey (RAL 7016)
- Optionally available with anodised aluminium storage pocket (160 x 45 x 160 mm)



Version	incl. holder	-
Pack quantity	6	6
Dimensions W x D x H mm	160 x 45 x 160	152 x 152 x 5
Order ref.	61302006.19V	61302007.19V

## Single lashing point -oo- mounted in T-slot

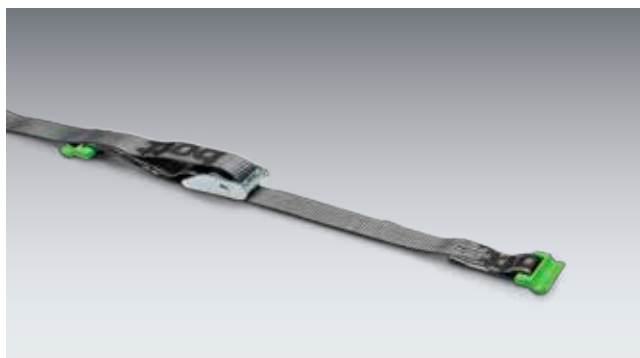


- makes quick and flexible load restraint possible
- for mounting on bott vario3 vehicle equipment, suitable for the T-slot on the bott vario3 end frame and various system components
- with Airline-hole patterns -oo- for lashing straps with fittings

Dimensions W x D x H mm	29 x 16 x 112
Order ref.	72610028.19V

# Load restraint

## C-Lash Lashing strap



- makes quick and flexible load restraint possible
- For mounting on bott vario3 vehicle equipment, on the bott vario3 end frame
- Includes:
  - 1x lashing strap (-C-) with cam-buckle
  - 2x single lashing point (-C-) surface mounted
  - bott branded strap in anthracite grey
  - Strap width 25 mm

Version	lashing strap C-Lash - surface mounted	lashing strap C-Lash - surface mounted
Strap length mm	1000	2500
Fixed end mm	100	100
Load capacity daN	100	100
Order ref.	72610034.19V	72610035.19V

Version	lashing strap C-Lash - mounted in T-slot	lashing strap C-Lash - mounted in T-slot
Strap length mm	1000	2500
Fixed end mm	100	100
Load capacity daN	100	100
Order ref.	72610030.19V	72610031.19V

Version	lashing strap C-Lash - mounted between end frames	lashing strap C-Lash - mounted between end frames
Strap length mm	1000	2500
Fixed end mm	100	100
Load capacity daN	100	100
Order ref.	72610041.17V	72610042.17V

Version	lashing strap with C-Lash and cam-buckle	lashing strap with C-Lash and cam-buckle	lashing strap with C-Lash and cam-buckle
Strap length mm	700	1000	2500
Fixed end mm	100	100	100
Load capacity daN	50	50	50
Order ref.	62626099.19V	62626095.19V	62626096.19V

## Lashing strap with auto-wind



- For quick and easy load restraint
- Variant without fixed length strap end must be bolted to van racking
- Black strap
- Strap width 25 mm
- Strap length 2000 mm

Version	Hook – Hook	Fitting – to be bolted on	Fitting – Fitting
Fixed end mm	200	–	200
Load capacity daN	125	125	125
Order ref.	62626062.90	62626061.90	62626065.90





# Load restraint

## Lashing eyes



- Sheet steel, zinc-plated
- Flush-fitting
- Including fixing kit

Version	Lashing eye	Lashing eye
Dimensions W x D x H mm	104 x 70 x 12	145 x 100 x 17
Order ref.	63003033.51V	63003034.51V



## Ratchet strap with hook end



- bott branded strap in anthracite grey
- Universal hook for use with lashing eyes
- Strap width 25 mm

Strap length mm	3000	5000
Fixed end mm	130	500
Load capacity daN	400	650
Order ref.	62626067.19V	62626033.19V

## Lashing straps with wide belt strap



- bott branded lashing strap in anthracite grey
- Strap width 50 mm

Version	Wire hook	Snap hook
Strap length mm	5000	5000
Fixed end mm	500	500
Load capacity daN	750	750
Order ref.	62626089.19	62626091.19

# Load restraint

## Strap with cam buckle



- bott branded strap in anthracite grey
- Strap width 25 mm

Strap length mm	1000	2500
Load capacity daN	300	300
Order ref.	62626037.19V	62626039.19V



## Lashing straps with snap hook



- bott branded strap in anthracite grey
- Strap width 25 mm

Version	Ratchet	Ratchet	Ratchet
Strap length mm	2500	3500	5000
Fixed end mm	250	500	500
Load capacity daN	650	650	650
Order ref.	62626075.19	62626076.19	62626077.19

Version	Cam-buckle	Cam-buckle	Cam-buckle
Strap length mm	2500	3500	5000
Fixed end mm	250	500	500
Load capacity daN	150	150	150
Order ref.	62626081.19	62626082.19	62626083.19



# Accessories

Mobile workstation

Storing and  
securing small parts

Always perfectly  
organised





## Accessories to suit every requirement

On the following pages, you will find numerous practical aids for your day-to-day service vehicle operations and for the storage and organisation of equipment and materials to ensure that you can work fast and reliably with your bott vario3 van racking solution. Also, there won't be any nasty surprises if you are stopped by the police. Our law enforcers tend to hand out hefty fines for loads that have not been properly secured. Rightly so, as this not only puts the vehicle driver and passengers at risk but also the other road users.

Our product offer contains a wide range of components to satisfy any special requirements, permitting you to store your equipment safely, regardless of type or dimensions, whilst also keeping it within easy reach.

# Accessories

## Folding worktop



- For working with materials outside of the vehicle
- Cross-laminated beech plywood worktop, natural finish, multiple layered and laterally glued in layers with an oiled finish
- Suitable for vices with jaw width of up to 125 mm

Version	without vice	incl. vice with 125 mm jaw width	incl. turntable and vice with 125 mm jaw width
Dimensions W x D x H mm	125 x 285 x 895	220 x 285 x 895	240 x 285 x 895
Order ref.	71220042.19V	71220043.19V	71220044.19V



## Gas cylinder set with strap



- for the safe transport of compressed gas canisters
- Strap length 1000mm
- Load capacity up to 500 daN



Version	with 1 lashing rail and 1 ratchet strap	with 1 lashing rail and 1 ratchet strap	with 1 lashing rail and 1 ratchet strap
For system depth mm	264	376	488
Dimensions W x D x H mm	21 x 264 x 46	21 x 376 x 46	21 x 488 x 46
Order ref.	72615001.19V	72615002.19V	72615003.19V

Version	with 2 lashing rails and 2 ratchet straps	with 2 lashing rails and 2 ratchet straps	with 2 lashing rails and 2 ratchet straps
For system depth mm	264	376	488
Dimensions W x D x H mm	21 x 264 x 46	21 x 376 x 46	21 x 488 x 46
Order ref.	72615004.19V	72615005.19V	72615006.19V

# Accessories

## Floor-mounted vent



- Provides floor -level ventilation when transporting compressed gas cylinders
- Plastic: anthracite
- Requires Ø 89 mm cut-out
- Wooden vehicle floor also requires Ø 89 mm cut-out
- With DEKRA certificate



Version	Floor vent
Dimensions W x D x H mm	110 x 110 x 100
Order ref.	63502055.19V





## Floor-mounted vent



- Provides floor -level ventilation when transporting compressed gas cylinders
- Sheet steel, galvanised
- With square section duct and water deflection plate
- Requires 130 x 130 mm cut-out

Dimensions W x D x H mm	164 x 164 x 80
Order ref.	08032021

## Roof- or side-mounted vent



- Provides roof or side ventilation when transporting compressed gas cylinders
- Plastic: anthracite
- Requires Ø 54 mm cut-out
- Low-profile design means vehicle can still be cleaned in a car-wash
- Incl. fixing clip
- With DEKRA certificate



Version	Vent
Dimensions W x D x H mm	94 x 140 x 40
Order ref.	63502054.19V



# Accessories

## Roof- or side-mounted vent



- Provides roof or side ventilation when transporting compressed gas cylinders
- Plastic: black
- Requires 76 x 216 mm cut-out
- Low-profile design means vehicle can still be cleaned in a car-wash

Dimensions W x D x H mm	205 x 355 x 50
Order ref.	80833215.10V

## Gas cylinder cabinet



- ergonomic operation via gas bottle shelf with full extension slide
- secure storage of the gas bottle via integrated lashing rail (-oo-)
- ventilation opening in cabinet base as well as circumferential door seal ensure storage and transport in accordance with regulations
- integrated into a bott vario3 in-vehicle equipment design between adjacent end frames

Dimensions W x D x H mm	590 x 366 x 800
Order ref.	70001001.19V

Document holders



- Anodised aluminium
- for document storage or other equipment

Version	Long items	Long items	DIN first-aid kits	DIN A4 portrait	DIN A4 (angled)
From system depth mm	264	264	264	264	376
Dimensions W x D x H mm	114 x 114 x 500	76 x 76 x 500	175 x 93 x 230	215 x 85 x 275	256 x 300 x 300
Order ref.	62530004.97V	62530005.97V	62530003.97V	62530001.97V	62530006.97V



# Accessories

## Lashing strap bag



■ Ideal for vehicles with bott vario3 van racking



Dimensions W x D x H mm	300 x 0 x 265
Order ref.	14014066



## bott vario CarOffice



- Practical way to store office supplies
- Ensures order in the passenger seat
- With two holders for brochures, catalogues and other documents
- A storage box for small parts that can be quickly removed
- A folding, non-slip writing pad with magnetic holder and built-in cylinder holder
- Simple and secure mounting on the passenger seat with the seat belt and a variably adjustable headrest adapter



Dimensions W x D x H mm	340 x 520 x 690
Order ref.	63003098.19V

## Document holder



- A light plastic pocket for documents, brochures and small document folders
- DIN A4 landscape format
- Incl. labelling clip for colour coordination
- Hole pattern matched to the perfo hole grid in the bott vario3 end frames for quick installation without drilling

Version	DIN A4 landscape format
From system depth mm	376
Dimensions W x D x H mm	340 x 100 x 213
Order ref.	14014028.19



# Accessories

## Universal holder for safety helmets



- Universally adjustable for different sizes and shapes
- Optimised for installation on bott vario3 end frames or perfo perforated panels
- Material: Anodised aluminium

Dimensions W x H mm	256 x 281
Order ref.	63003130.97

## TiltBox



- For installing on perfo perforated panels and bott vario3 end frames
- Incl. 1 divider, load capacity up to 4 kg



Version	TiltBox	TiltBox	Additional TiltBox divider
Pack quantity	1	8	1
Dimensions W x D x H mm	304 x 147 x 196	304 x 147 x 196	3 x 106 x 171
Order ref.	14014060.19V	14014063.19V	14014065



## bott vario3 spray can holder, angled

- For installing on bott vario3 end frames
- Powder-coated sheet steel
- Colour: anthracite grey (RAL 7016)



Version	For cans up to max. ø 68 mm
Pack quantity	1 piece with 3 capacity
Dimensions W x D x H mm	100 x 230 x 159
Order ref.	72530003.19V

## bott vario3 cartridge holder, angled

- For installing on bott vario3 end frames
- Powder-coated sheet steel
- Colour: anthracite grey (RAL 7016)



Version	For cartridges up to max. ø 50 mm
Pack quantity	1 piece with 4 capacity
Dimensions W x D x H mm	100 x 230 x 159
Order ref.	72530002.19V

## Storage box for end frames



- for the storing of small parts and required materials
- For installing on bott vario3 end frames
- incl. Fixing kit
- Powder-coated sheet steel
- Colour: anthracite grey (RAL 7016)

For system depth mm	376	488
Dimensions W x D x H mm	100 x 376 x 100	100 x 488 x 100
Order ref.	73003002.19V	73003003.19V

# Accessories

## Storage pocket with 2 cones



- Anodised aluminium storage pocket with 2 cones
- For installing on bott vario3 end frames
- 2 cones with flashing and continuous light
- Cone dimension W x D x H: 280 x 280 x 500 mm
- Incl. storage bag



From system depth mm	376
Dimensions W x D x H mm	300 x 132 x 310
Order ref.	63003122.97V

## Folding storage box



- Volume 30 litres
- Needs little space when folded up
- Assembled quickly thanks to Velcro closures
- Extremely stable thanks to integrated reinforced panels
- Watertight and resistant to many chemicals and oils
- Also ideal as an emergency measure in the event of an oil leak on construction, agricultural or forestry machinery or other leaks
- Storage pocket made of anodised aluminium for mounting on the bott vario3 end frame

Version	with storage pocket
From system depth mm	488
Dimensions W x D x H mm	437 x 43 x 600
Order ref.	72530021.97V

## Case holder for Systainer<sup>3</sup> Organizer and varioCase 84



- Painted steel sheet
- Colour: anthracite grey (RAL 7016)

Version	Case holder
From system depth mm	376
Dimensions W x D x H mm	100 x 371 x 0
Order ref.	72103032.19V

## Box shelf with bottBoxes for vehicle bulkhead



- For mounting directly on the vehicle bulkhead or on a perfo perforated panel
- Aluminium box tray
- Incl. 7x bottBox M1

Dimensions W x D x H mm	920 x 128 x 67
Order ref.	62533403.19V

# Accessories

## Spirit level holder



- for transporting long parts such as spirit levels or hydrant keys
- for mounting on bott vario3 shelves or long item top trays
- With hook and loop fasteners and fixing bolts
- Pack of 2
- Powder-coated sheet steel
- Colour: anthracite grey (RAL 7016)

Dimensions W x D x H mm	94 x 32 x 58
Order ref.	73508001.19V

## Handle



- For safe entry into the vehicle
- For installation inside side or rear doors
- Hole spacing 408 mm
- Colours: yellow-green (RAL 6018) anthracite grey (RAL 7016)



Version	yellow-green	anthracite grey
Dimensions W x D x H mm	40 x 75 x 435	40 x 75 x 435
Order ref.	80701007.17	80701007.19







# Accessories

## Hose holder



- Sturdy holder for hoses and cables
- For installing on perfo perforated panels or bott vario3 end frame
- Material: Die-cast aluminium
- Including fixing kit

Version	Hose holder S	Hose holder M	Hose holder L	Hose holder X
From system depth mm	264	264	376	376
Dimensions W x D x H mm	190 x 70 x 145	265 x 105 x 200	350 x 145 x 255	415 x 190 x 305
Order ref.	14050001	14050002	14050003	14050004

## Jerrycan compartment



- Suitable for 5 l plastic fuel cans or 10 l/20 l sheet steel fuel canisters
- For 5 l cans: made of anodised aluminium
- For 10 l and 20 l jerrycans: made of powder-coated sheet steel RAL 7016
- Incl. cam buckle strap with self-locking buckle for securing jerrycans while driving

Version	1x 5 l	1x 10 l / 20 l	3x 10 l / 20 l
Dimensions W x D x H mm	163 x 311 x 215	173 x 342 x 243	518 x 342 x 243
Order ref.	63003007.97V	63003008.19V	63003009.19V

## Sack truck



- Sturdy aluminium / plastic construction
- Transport platform approx. W 490 x D 270 mm
- Folding base & wheels / telescopic handle
- Incl. rubber strap to secure goods in place
- Max. load capacity = 125 kg

Dimensions W x D x H mm	490 x 60 x 755
Order ref.	63003026.90V

## Sack truck holder



- Suitable for the bott sack truck
- For installing on vehicle bulkheads and bott vario3 end frames
- Fixing kit included
- Material: Sheet steel
- Colour: anthracite grey (RAL 7016)

Version	Sack truck holder
From system depth mm	488
Dimensions W x D x H mm	500 x 72 x 80
Order ref.	63502064.19V

# Accessories

## Long-item top tray with sliding end-plate



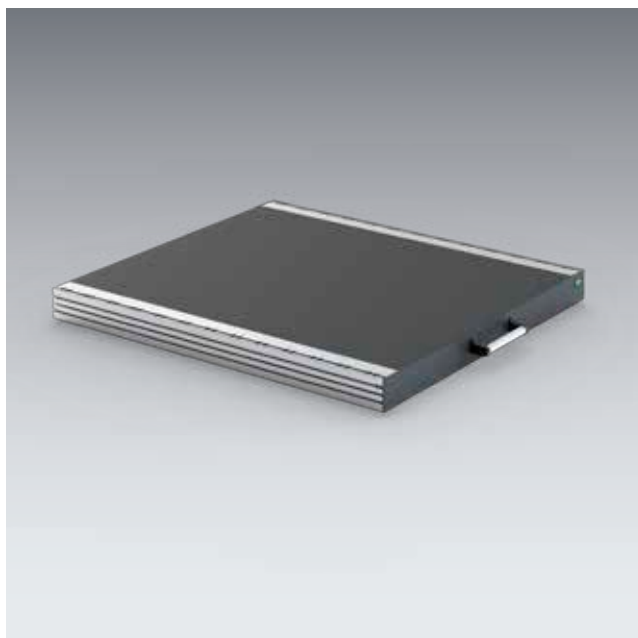
- for the storing and transporting of long items
- Convenient loading and unloading without entering the vehicle
- Can be combined with lashing strap C-Lash (-C-) with single point lashing (-C-) design for optimal load restraint
- Length is continuously adjustable
- Height: 100 mm
- Load capacity: 30 kg

max. number of single lashing points (-C-)	4	5	7	10
System depth mm	264	264	264	264
Dimensions W x D x H mm	2046 x 264 x 100	2158 x 264 x 100	2158 x 264 x 100	3614 x 264 x 100
Order ref.	72533172.97V	72533173.97V	72533174.97V	72533175.97V

max. number of single lashing points (-C-)	4	5	7
System depth mm	376	376	376
Dimensions W x D x H mm	2046 x 376 x 100	2158 x 376 x 100	2158 x 376 x 100
Order ref.	72533176.97V	72533177.97V	72533178.97V



## Heavy duty sliding platforms with full extension slide



- Smooth-running heavy duty sliding platform with 200 kg load capacity
- Ergonomic access to the cargo via 100% full extension slide
- Can be locked when open, making easy loading and unloading of heavy and bulky objects possible
- Flexible load restraint thanks to lashing rails with airline profile integrated on both sides
- Simple and safe operation via large ergonomic handle
- Sturdy structure made of lightweight aluminium and sturdy sheet steel, with slip-resistant plastic panel
- Can be installed directly on the vehicle floor
- Height 101 mm

Width mm	492	492	492
Depth mm	716	940	1388
Dimensions of cargo area W x D mm	420 x 622	420 x 846	420 x 1294
Order ref.	71220021.19V	71220022.19V	71220023.19V

Width mm	716	716	716
Depth mm	716	940	1388
Dimensions of cargo area W x D mm	646 x 622	646 x 846	646 x 1294
Order ref.	71220024.19V	71220025.19V	71220026.19V

Width mm	940	940	940
Depth mm	716	940	1388
Dimensions of cargo area W x D mm	870 x 622	870 x 846	870 x 1294
Order ref.	71220027.19V	71220028.19V	71220029.19V

Width mm	1164	1164	1164
Depth mm	716	940	1388
Dimensions of cargo area W x D mm	1094 x 622	1094 x 846	1094 x 1294
Order ref.	71220030.19V	71220031.19V	71220032.19V

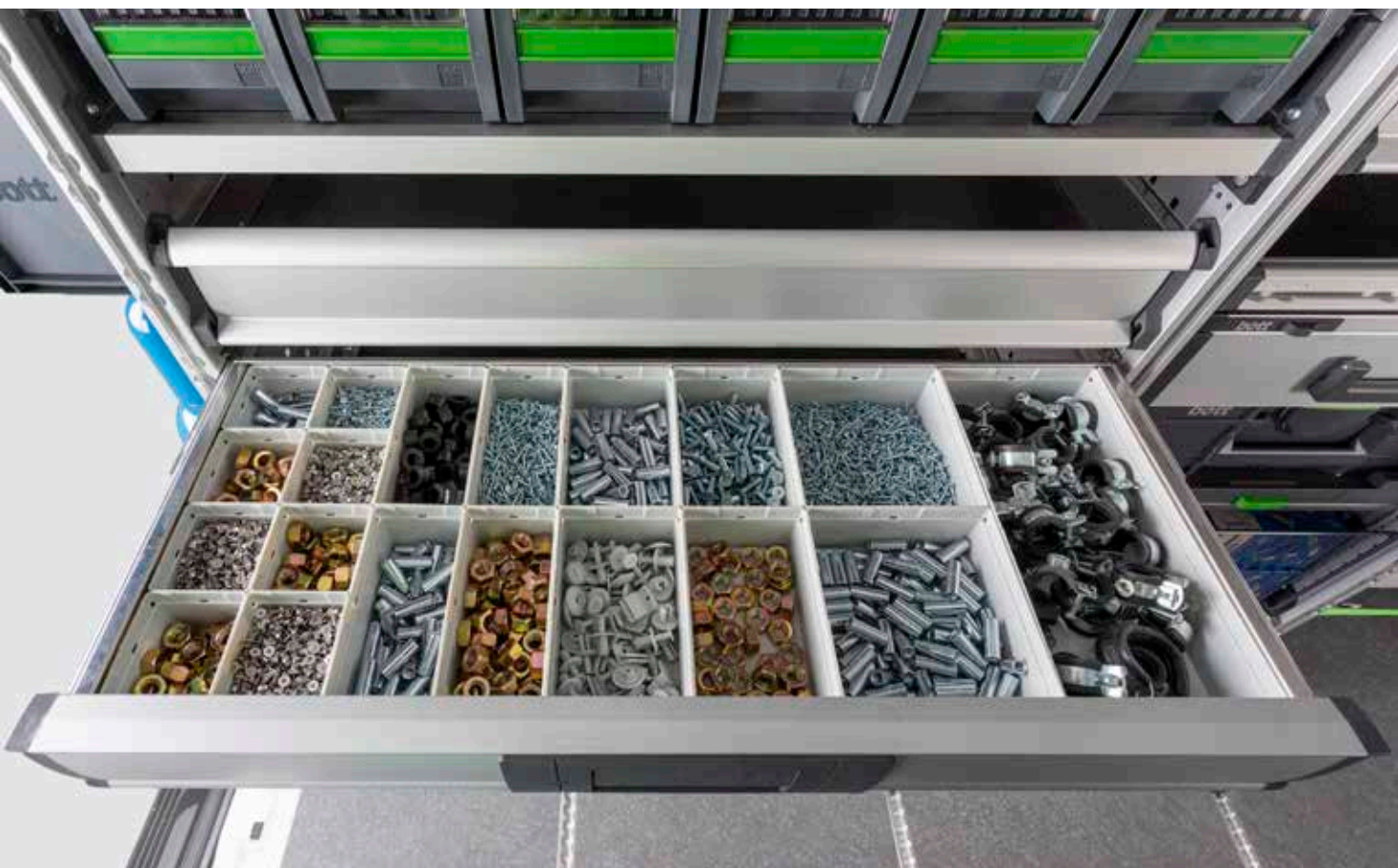
# Drawer dividers

Dividers and cross dividers

Small parts storage boxes

Smallest parts  
stowed away safely and  
clearly organised





## An end to constantly searching for what you need

Keep your parts and materials perfectly organised with bott vario3 storage drawers. They're a great way to organise all your tools and small parts and to store them safely. Everything is kept in its place in the load space, even in difficult driving conditions. Simply position the drawers where they are easiest to reach to keep your material handy. Our smooth running and robust drawers have a high load capacity and can hold up to 70 kilograms.

We offer numerous different options for dividing the drawer interior. Configure your drawers with dividers and cross dividers for well-organised storage. You could, of course, also use one of our small parts storage box divider kits. They offer the additional advantage that you can carry them and their contents to wherever you are working. A great way to keep everything handy. You can label the small parts storage boxes, so you'll always know what's inside them.

# Drawer dividers



## Dividers and cross dividers

- Aluminium (natural)
- Each divider supplied with 2 holders
- 68 mm high for drawer heights of 100/125 mm
- 118 mm high for drawer heights of 150 mm or above



## Small parts storage boxes

- For customised division of drawers
- Rounded corners for easy removal of small parts
- Removal of individual boxes possible
- Colour: light grey (RAL 7035)
- Height 68 mm



## Further solutions

- Foam inlay for high-value tools
- Storage trays
- Inserts for drawers

# Case Systems

Connecting working  
environments

Connects workshop,  
service vehicle and  
construction site

Perfectly integrated

Stackable

Operated with one hand





## Systainer<sup>3</sup> connects

With the practical and robust system case, you can neatly organise small parts and consumables. In Systainer<sup>3</sup> you can transport everything comfortably and safely to your assignment location. Cases can be inserted like drawers into the in-vehicle equipment on suitable guide rails. Also, for bott workshop equipment there are corresponding drawer rails, so you can cleanly and clearly store your Systainer<sup>3</sup> both in the workshop and in the service vehicle.

The Systainer<sup>3</sup> is a widely-distributed market standard that can be ideally integrated into the bott vario3 in-vehicle equipment. Festool, Tanos and bott developed the mobility concept together in order to provide the perfect service case. The cases are stackable and can be connected. The front of the Systainer<sup>3</sup> can be labelled in bank card format to show its contents.



# Case Systems



- A wide product range and a comprehensive choice of accessories allow optimal solutions to be created to suit any application.
- Simple integration into bott vario3 van racking and bott workshop equipment thanks to side mounts for guide rails.
- Orderly and clear storage of power tools, small parts and consumables enhances working efficiency.
- Maximum flexibility for on & off-site working.
- All size M cases are designed to suit the bott vario3 system width 478-4, size L cases suit the bott vario3 system width 590-5.
- Ideal in combination with the bott vario3 service case sliding shelf. Full-extension slides allow efficient and unrestricted access to the contents of the case without having to remove the case from the van racking.



## Systainer<sup>3</sup>

- Practical and sturdy system case for the secure and tidy storage and transport of small parts and consumables
- Multifunctional T-LOC: close, open, connect - with just one twist
- Optional labelling via 2 card slots on the front of the case - in standard bank card format
- Can be stacked and connected to all other Systainer products
- Load capacity (single case): 20 kg
- Load capacity (with 2 or more cases connected): 40 kg
- Material: ABS



## Systainer<sup>3</sup> Organizer

- Transparent lid allows contents to be seen thus minimising search times
- Multifunctional T-LOC: close, open, connect - with just one twist
- Optional labelling via 2 card slots on the front of the case - in standard bank card format
- Can be stacked and connected to many other Systainer products
- Load capacity: 20 kg



## bott varioCase

- High-quality service case made from lightweight aluminium or robust sheet steel
- High levels of versatility due to comprehensive range of accessories
- Lid automatically locks when closed preventing accidental spills
- Load capacity: 20 kg

# Case systems Systainer<sup>3</sup>M

## Systainer<sup>3</sup> M empty case for customised configuration



- Practical and sturdy system case for the safe and proper storage and transport of power tools, hand tools, small parts and consumables
- Simple integration in bott vario3 in-vehicle equipment and bott workshop equipment via integrated side mounts for guide rails
- Multifunctional T-LOC: close, open, connect - with just one twist
- 2 integrated label holders, one either side of the carry handle (bank card format)
- Can be stacked and linked to all other Systainer products
- Load bearing capacity (single): 20 kg
- Load bearing capacity (when connected): 40 kg
- Material: ABS



Description	Systainer <sup>3</sup> M 112	Systainer <sup>3</sup> M 137	Systainer <sup>3</sup> M 187
Version	Carry handle	Carry handle	Carry handle
Assembly	Empty	Empty	Empty
Dimensions W x D x H mm	396 x 296 x 112	396 x 296 x 137	396 x 296 x 187
Order ref.	72520003.19V	72520004.19V	72520005.19V



Description	Systainer <sup>3</sup> M 237	Systainer <sup>3</sup> M 337	Systainer <sup>3</sup> M 437
Version	Moulded finger grip	Moulded finger grip	Moulded finger grip
Assembly	Empty	Empty	Empty
Dimensions W x D x H mm	396 x 296 x 237	396 x 296 x 337	396 x 296 x 437
Order ref.	72520006.19V	72520007.19V	72520008.19V

## Systainer<sup>3</sup> M 112 with universal inlay



- Practical and sturdy system case for the safe and proper storage and transport of small parts and consumables
- Equipped with universal inlay with 10 differently sized compartments and lid insert
- Simple integration in bott vario3 in-vehicle equipment and bott workshop equipment via integrated side mounts for guide rails
- Multifunctional T-LOC: close, open, connect - with just one twist
- 2 integrated label holders, one either side of the carry handle (bank card format)
- Can be stacked and linked to all other Systainer products
- Load bearing capacity (single): 20 kg
- Load bearing capacity (when connected): 40 kg
- Material: ABS

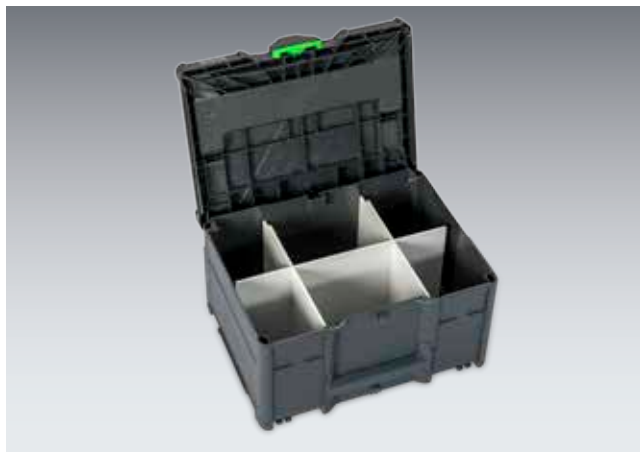
Description	Systainer <sup>3</sup> M 112
Assembly	Universal inlay with 10 compartments
Dimensions W x D x H mm	396 x 296 x 112
Order ref.	72520027.19V





# Case systems Systainer<sup>3</sup>M

## Systainer<sup>3</sup> M with divider Set



- Practical and sturdy system case for the safe and proper storage and transport of hand tools, small parts and consumables
- Equipped with compartment divider set for the division of the case into up to 6 equally sized compartments
- Simple integration in bott vario3 in-vehicle equipment and bott workshop equipment via integrated side mounts for guide rails
- Multifunctional T-LOC: close, open, connect - with just one twist
- 2 integrated label holders, one either side of the carry handle (bank card format)
- Can be stacked and linked to all other Systainer products
- Load bearing capacity (single): 20 kg
- Load bearing capacity (when connected): 40 kg
- Material: ABS

Description	Systainer <sup>3</sup> M 237	Systainer <sup>3</sup> M 337	Systainer <sup>3</sup> M 437
Version	Moulded finger grip	Moulded finger grip	Moulded finger grip
Assembly	Compartment divider set	Compartment divider set	Compartment divider set
Dimensions W x D x H mm	396 x 296 x 237	396 x 296 x 337	396 x 296 x 437
Order ref.	72520047.19V	72520048.19V	72520049.19V





## Systainer<sup>3</sup> M with die-cut insert



- Practical and sturdy system case for the safe and proper storage and transport of hand tools, small parts and consumables
- Equipped with foam cushion, die-cut foam inserts (25mm pitch) and lid pad for designing individual inserts
- Simple integration in bott vario3 in-vehicle equipment and bott workshop equipment via integrated side mounts for guide rails
- Multifunctional T-LOC: close, open, connect - with just one twist
- 2 integrated label holders, one either side of the carry handle (bank card format)
- Can be stacked and linked to all other Systainer products
- Load bearing capacity (single): 20 kg
- Load bearing capacity (when connected): 40 kg
- Material: ABS

Description	Systainer <sup>3</sup> M 112	Systainer <sup>3</sup> M 137	Systainer <sup>3</sup> M 187
Version	Moulded finger grip	Moulded finger grip	Moulded finger grip
Assembly	1x foam cushion 1x die-cut foam insert 1x lid pad	1x foam cushion 2x die-cut foam insert 1x lid pad	1x foam cushion 4x die-cut foam insert 1x lid pad
Dimensions W x D x H mm	396 x 296 x 112	396 x 296 x 137	396 x 296 x 187
Order ref.	72520038.19V	72520039.19V	72520040.19V

Description	Systainer <sup>3</sup> M 237	Systainer <sup>3</sup> M 337	Systainer <sup>3</sup> M 437
Version	Moulded finger grip	Moulded finger grip	Moulded finger grip
Assembly	1x foam cushion 6x die-cut foam insert 1x lid pad	1x foam cushion 10x die-cut foam insert 1x lid pad	1x foam cushion 14x die-cut foam insert 1x lid pad
Dimensions W x D x H mm	396 x 296 x 237	396 x 296 x 337	396 x 296 x 437
Order ref.	72520041.19V	72520042.19V	72520043.19V

# Case systems Systainer<sup>3</sup>M

## Systainer<sup>3</sup> M with spray can insert



- Practical and sturdy system case for the safe and proper storage and transport of spray cans
- Equipped with spray can insert made of EPP for 14 cans with max. diameter 69 mm
- Simple integration in bott vario3 in-vehicle equipment and bott workshop equipment via integrated side mounts for guide rails
- Multifunctional T-LOC: close, open, connect - with just one twist
- 2 integrated label holders, one either side of the carry handle (bank card format)
- Can be stacked and linked to all other Systainer products
- Load bearing capacity (single): 20 kg
- Load bearing capacity (when connected): 40 kg
- Material: ABS



Description	Systainer <sup>3</sup> M 337	Systainer <sup>3</sup> M 437
Version	Moulded finger grip	Moulded finger grip
Assembly	Spray can insert	Spray can insert
Dimensions W x D x H mm	396 x 296 x 337	396 x 296 x 437
Order ref.	72520029.19V	72520030.19V



## Systainer<sup>3</sup> M with cartridge storage insert



- Practical and sturdy system case for the safe and proper storage and transport of cartridges
- Equipped with cartridge storage insert made of EPP for 22 cartridges with max. diameter 51 mm and 15 cartridge nozzles
- Simple integration in bott vario3 in-vehicle equipment and bott workshop equipment via integrated side mounts for guide rails
- Multifunctional T-LOC: close, open, connect - with just one twist
- 2 integrated label holders, one either side of the carry handle (bank card format)
- Can be stacked and linked to all other Systainer products
- Load bearing capacity (single): 20 kg
- Load bearing capacity (when connected): 40 kg
- Material: ABS



Description	Systainer <sup>3</sup> M 337	Systainer <sup>3</sup> M 437
Version	Moulded finger grip	Moulded finger grip
Assembly	Cartridge storage insert	Cartridge storage insert
Dimensions W x D x H mm	396 x 296 x 337	396 x 296 x 437
Order ref.	72520031.19V	72520032.19V



# Case systems Systainer<sup>3</sup>L

## Systainer<sup>3</sup> L empty case for customised configuration



- Practical and sturdy system case for the safe and proper storage and transport of power tools, hand tools, small parts and consumables
- Simple integration in bott vario3 in-vehicle equipment and bott workshop equipment via integrated side mounts for guide rails
- Multifunctional T-LOC: close, open, connect - with just one twist
- 2 integrated label holders, one either side of the carry handle (bank card format)
- Can be stacked and linked to all other Systainer products
- Load bearing capacity (single): 20 kg
- Load bearing capacity (when connected): 40 kg
- Material: ABS



Description	Systainer <sup>3</sup> L 137	Systainer <sup>3</sup> L 187	Systainer <sup>3</sup> L 237
Version	Carry handle	Carry handle	Moulded finger grip
Assembly	Empty	Empty	Empty
Dimensions W x D x H mm	508 x 296 x 137	508 x 296 x 187	508 x 296 x 237
Order ref.	72520009.19V	72520010.19V	72520011.19V

## Systainer<sup>3</sup> L 137 with universal inlay



- Practical and sturdy system case for the safe and proper storage and transport of small parts and consumables
- Equipped with universal inlay with 6 differently sized compartments and lid insert
- Simple integration in bott vario3 in-vehicle equipment and bott workshop equipment via integrated side mounts for guide rails
- Multifunctional T-LOC: close, open, connect - with just one twist
- 2 integrated label holders, one either side of the carry handle (bank card format)
- Can be stacked and linked to many other Systainer products
- Load bearing capacity (single): 20 kg
- Load bearing capacity (when connected): 40 kg
- Material: ABS

Description	Systainer <sup>3</sup> L 137
Assembly	Universal inlay with 6 compartments
Dimensions W x D x H mm	508 x 296 x 137
Order ref.	72520028.19V





# Case systems Systainer<sup>3</sup>L

## Systainer<sup>3</sup> L with die-cut insert



- Practical and sturdy system case for the safe and proper storage and transport of hand tools, small parts and consumables
- Equipped with foam cushion, die-cut foam inserts (25mm pitch) and lid pad for designing individual inserts
- Simple integration in bott vario3 in-vehicle equipment and bott workshop equipment via integrated side mounts for guide rails
- Multifunctional T-LOC: close, open, connect - with just one twist
- 2 integrated label holders, one either side of the carry handle (bank card format)
- Can be stacked and linked to many other Systainer products
- Load bearing capacity (single): 20 kg
- Load bearing capacity (when connected): 40 kg
- Material: ABS



Description	Systainer <sup>3</sup> L 137	Systainer <sup>3</sup> L 187	Systainer <sup>3</sup> L 237
Version	Carry handle	Carry handle	Pull-out aid
Assembly	1x foam cushion 2x die-cut foam insert 1x lid pad	1x foam cushion 4x die-cut foam insert 1x lid pad	1x foam cushion 6x die-cut foam insert 1x lid pad
Dimensions W x D x H mm	508 x 296 x 137	508 x 296 x 187	508 x 296 x 237
Order ref.	72520044.19V	72520045.19V	72520046.19V

# Case systems Systainer<sup>3</sup> Organizer M + L

## Systainer<sup>3</sup> Organizer empty case for customised configuration



- Practical and sturdy system case for the safe and proper storage and transport of small parts and consumables
- Transparent lid allows you to see the contents and minimises search times
- Simple integration in bott vario3 in-vehicle equipment and bott workshop equipment via integrated side mounts for guide rails
- Multifunctional T-LOC: close, open, connect - with just one twist
- 2 integrated label holders, one either side of the carry handle (bank card format)
- Can be stacked and linked to many other Systainer products
- Load capacity: 20 kg



Description	Systainer <sup>3</sup> Organizer M 89	Systainer <sup>3</sup> Organizer L 89
Assembly	Empty	Empty
Dimensions W x D x H mm	396 x 296 x 89	508 x 296 x 89
Order ref.	72520001.19V	72520002.19V



# Case systems Systainer<sup>3</sup> Organizer M + L

## Systainer<sup>3</sup> Organizer with small parts storage boxes



- Practical and sturdy system case for the safe and proper storage and transport of small parts and consumables
- Equipped with small parts storage boxes
- Transparent lid allows you to see the contents and minimises search times
- Simple integration in bott vario3 in-vehicle equipment and bott workshop equipment via integrated side mounts for guide rails
- Multifunctional T-LOC: close, open, connect - with just one twist
- 2 integrated label holders, one either side of the carry handle (bank card format)
- Can be stacked and linked to many other Systainer products
- Load capacity: 20 kg



Description	Systainer <sup>3</sup> Organizer M 89	Systainer <sup>3</sup> Organizer M 89	Systainer <sup>3</sup> Organizer M 89
Assembly	12 boxes	18 boxes	28 boxes
Dimensions W x D x H mm	396 x 296 x 89	396 x 296 x 89	396 x 296 x 89
Order ref.	72520021.19V	72520022.19V	72520023.19V



Description	Systainer <sup>3</sup> Organizer L 89	Systainer <sup>3</sup> Organizer L 89	Systainer <sup>3</sup> Organizer L 89
Assembly	13 boxes	20 boxes	33 boxes
Dimensions W x D x H mm	508 x 296 x 89	508 x 296 x 89	508 x 296 x 89
Order ref.	72520024.19V	72520025.19V	72520026.19V

## varioCase M empty



- Lightweight and high-quality service case for customised configuration
- Simple integration in bott vario3 in-vehicle equipment and bott workshop equipment via integrated side mounts for guide rails
- Lid automatically locks when closed preventing accidental spills
- Load capacity: 20 kg
- Material: anodised aluminium



Description	varioCase M 84	varioCase M 135
Assembly	Empty	Empty
Dimensions W x D x H mm	396 x 337 x 84	396 x 337 x 135
Order ref.	72511001.97V	72511003.97V

## varioCase M empty



- Sturdy and high-quality service case for customised configuration
- Simple integration in bott vario3 in-vehicle equipment and bott workshop equipment via integrated side mounts for guide rails
- Lid automatically locks when closed preventing accidental spills
- Load capacity: 20 kg
- Material: powder coated sheet steel
- Colour: anthracite grey (RAL 7016)



Description	varioCase M 84	varioCase M 135
Assembly	Empty	Empty
Dimensions W x D x H mm	396 x 337 x 84	396 x 337 x 135
Order ref.	72511005.19V	72511007.19V

# Case systems varioCase M

## varioCase M with dividers and cross dividers



- Lightweight and high-quality service case equipped with dividers and cross dividers
- For the tidy and clear storage of tools and consumables
- Simple integration in bott vario3 in-vehicle equipment and bott workshop equipment via integrated side mounts for guide rails
- Lid automatically locks when closed preventing accidental spills
- Load capacity: 20 kg
- Material: anodised aluminium



Description	varioCase M 84	varioCase M 135
Assembly	2x divider / 5x cross divider	2x divider / 5x cross divider
Dimensions W x D x H mm	396 x 337 x 84	396 x 337 x 135
Order ref.	72511013.97V	72511015.97V

## varioCase M with dividers and cross dividers



- Sturdy and high-quality service case equipped with dividers and cross dividers
- For the tidy and clear storage of tools and consumables
- Simple integration in bott vario3 in-vehicle equipment and bott workshop equipment via integrated side mounts for guide rails
- Lid automatically locks when closed preventing accidental spills
- Load capacity: 20 kg
- Material: powder coated sheet steel
- Colour: anthracite grey (RAL 7016)



Description	varioCase M 84	varioCase M 135
Assembly	2x divider / 5x cross divider	2x divider / 5x cross divider
Dimensions W x D x H mm	396 x 337 x 84	396 x 337 x 135
Order ref.	72511014.19V	72511016.19V



## varioCase M 84 with small part storage box kits



- Lightweight and high-quality service case equipped with small parts storage boxes
- For the tidy and clear storage of small parts and consumables
- Simple integration in bott vario3 in-vehicle equipment and bott workshop equipment via integrated side mounts for guide rails
- Lid automatically locks when closed preventing accidental spills
- Load capacity: 20 kg
- Material: anodised aluminium



Description	varioCase M 84	varioCase M 84	varioCase M 84	varioCase M 84
Assembly	11 boxes	17 boxes	24 boxes	32 boxes
Dimensions W x D x H mm	396 x 337 x 84	396 x 337 x 84	396 x 337 x 84	396 x 337 x 84
Order ref.	72511017.97V	72511018.97V	72511020.97V	72511021.97V

## varioCase M 84 with small part storage box kits



- Sturdy and high-quality service case equipped with small parts storage boxes
- For the tidy and clear storage of small parts and consumables
- Simple integration in bott vario3 in-vehicle equipment and bott workshop equipment via integrated side mounts for guide rails
- Lid automatically locks when closed preventing accidental spills
- Load capacity: 20 kg
- Material: powder coated sheet steel
- Colour: anthracite grey (RAL 7016)

Description	varioCase M 84
Assembly	17 boxes
Dimensions W x D x H mm	396 x 337 x 84
Order ref.	72511019.19V

# Case systems varioCase M

## varioCase M 135 with small part storage box kits



- Lightweight and high-quality service case equipped with small parts storage boxes
- For the tidy and clear storage of small parts and consumables
- Ample storage space via integrated second storage level with box tray
- Simple integration in bott vario3 in-vehicle equipment and bott workshop equipment via integrated side mounts for guide rails
- Lid automatically locks when closed preventing accidental spills
- Load capacity: 20 kg
- Material: anodised aluminium

Description	varioCase M 135
Assembly	33 boxes with box tray
Dimensions W x D x H mm	396 x 337 x 135
Order ref.	72511022.97V

## varioCase M 84 with nozzle insert



- Lightweight and high-quality service case equipped with nozzle insert and small parts storage boxes
- For the safe and clear storage of torch nozzles
- Simple integration in bott vario3 in-vehicle equipment and bott workshop equipment via integrated side mounts for guide rails
- Lid automatically locks when closed preventing accidental spills
- Load capacity: 20 kg
- Material: anodised aluminium

Description	varioCase M 84
Assembly	Nozzle insert and 2 small parts storage boxes
Dimensions W x D x H mm	396 x 337 x 84
Order ref.	72511029.97V

## varioCase L empty



- Lightweight and high-quality service case for customised configuration
- Simple integration in bott vario3 in-vehicle equipment and bott workshop equipment via integrated side mounts for guide rails
- Lid automatically locks when closed preventing accidental spills
- Load capacity: 20 kg
- Material: anodised aluminium



Description	varioCase L 84	varioCase L 135
Assembly	Empty	Empty
Dimensions W x D x H mm	508 x 337 x 84	508 x 337 x 135
Order ref.	72511002.97V	72511004.97V

## varioCase L empty



- Sturdy and high-quality service case for customised configuration
- Simple integration in bott vario3 in-vehicle equipment and bott workshop equipment via integrated side mounts for guide rails
- Lid automatically locks when closed preventing accidental spills
- Load capacity: 20 kg
- Material: powder coated sheet steel
- Colour: anthracite grey (RAL 7016)



Description	varioCase L 84	varioCase L 135
Assembly	Empty	Empty
Dimensions W x D x H mm	508 x 337 x 84	508 x 337 x 135
Order ref.	72511006.19V	72511008.19V

# Case systems varioCase L

## varioCase L with dividers and cross dividers



- Lightweight and high-quality service case equipped with dividers and cross dividers
- For the tidy and clear storage of tools and consumables
- Simple integration in bott vario3 in-vehicle equipment and bott workshop equipment via integrated side mounts for guide rails
- Lid automatically locks when closed preventing accidental spills
- Load capacity: 20 kg
- Material: anodised aluminium



Description	varioCase L 84	varioCase L 135
Assembly	3x divider / 6x cross divider	3x divider / 6x cross divider
Dimensions W x D x H mm	508 x 337 x 84	508 x 337 x 135
Order ref.	72511009.97V	72511011.97V

## varioCase L with dividers and cross dividers



- Sturdy and high-quality service case equipped with dividers and cross dividers
- For the tidy and clear storage of tools and consumables
- Simple integration in bott vario3 in-vehicle equipment and bott workshop equipment via integrated side mounts for guide rails
- Lid automatically locks when closed preventing accidental spills
- Load capacity: 20 kg
- Material: powder coated sheet steel
- Colour: anthracite grey (RAL 7016)



Description	varioCase L 84	varioCase L 135
Assembly	3x divider / 6x cross divider	3x divider / 6x cross divider
Dimensions W x D x H mm	508 x 337 x 84	508 x 337 x 135
Order ref.	72511010.19V	72511012.19V

## varioCase L 84 with small part storage box kits



- Lightweight and high-quality service case equipped with small parts storage boxes
- For the tidy and clear storage of small parts and consumables
- Simple integration in bott vario3 in-vehicle equipment and bott workshop equipment via integrated side mounts for guide rails
- Lid automatically locks when closed preventing accidental spills
- Load capacity: 20 kg
- Material: anodised aluminium



Description	varioCase L 84	varioCase L 84	varioCase L 84	varioCase L 84
Assembly	12 boxes and tool compartment	17 boxes and tool compartment	24 boxes and tool compartment	32 boxes and tool compartment
Dimensions W x D x H mm	508 x 337 x 84	508 x 337 x 84	508 x 337 x 84	508 x 337 x 84
Order ref.	72511023.97V	72511024.97V	72511026.97V	72511027.97V

## varioCase L 84 with small part storage box kits



- Sturdy and high-quality service case equipped with small parts storage boxes
- For the tidy and clear storage of small parts and consumables
- Simple integration in bott vario3 in-vehicle equipment and bott workshop equipment via integrated side mounts for guide rails
- Lid automatically locks when closed preventing accidental spills
- Load capacity: 20 kg
- Material: powder coated sheet steel
- Colour: anthracite grey (RAL 7016)

Description	varioCase L 84
Assembly	17 boxes and tool compartment
Dimensions W x D x H mm	508 x 337 x 84
Order ref.	72511025.19V



# Case systems varioCase L

## varioCase L 135 with small part storage box kits



- Lightweight and high-quality service case equipped with small parts storage boxes
- For the tidy and clear storage of small parts and consumables
- Ample storage space thanks to second storage level with box tray
- Simple integration in bott vario3 in-vehicle equipment and bott workshop equipment via integrated side mounts for guide rails
- Lid automatically locks when closed preventing accidental spills
- Load capacity: 20 kg
- Material: anodised aluminium

Description	varioCase L 135
Assembly	34 boxes with box tray and tool compartment
Dimensions W x D x H mm	508 x 337 x 135
Order ref.	72511028.97V

## varioCase L 84 with nozzle insert



- Lightweight and high-quality service case equipped with nozzle insert and small parts storage boxes
- For the safe and clear storage of oil burner nozzles
- Simple integration in bott vario3 in-vehicle equipment and bott workshop equipment via integrated side mounts for guide rails
- Lid automatically locks when closed preventing accidental spills
- Load capacity: 20 kg
- Material: anodised aluminium

Description	varioCase L 84
Assembly	Nozzle insert, 2 small parts storage boxes and tool compartment
Dimensions W x D x H mm	508 x 337 x 84
Order ref.	72511030.97V



perfo

Tidy workplace

Quick access to tools and  
small parts

One system - the original



## Tidy workplace, tidy mind.

Our perfo perforated wall system provides efficiency and order at the workplace. When tools and small parts are systematically organised, fast access is guaranteed. perfo offers a standardised system with many different hooks and tool holders.

In the bott vario3 in-vehicle equipment, the perfo grid is a standard feature on the end frames. In addition, perforated panels can be provided for the vehicle side linings or vehicle bulkhead.

Furthermore, the perfo perforated panels can be integrated into cubio cabinets and maintenance trolleys. Our perfo perforated panels are particularly suitable for wall or workbench mounting. In addition, free-standing perfo racks and perfo trolleys provide many possibilities for flexible positioning of tools and materials.



perfo

### perfo bottle holder

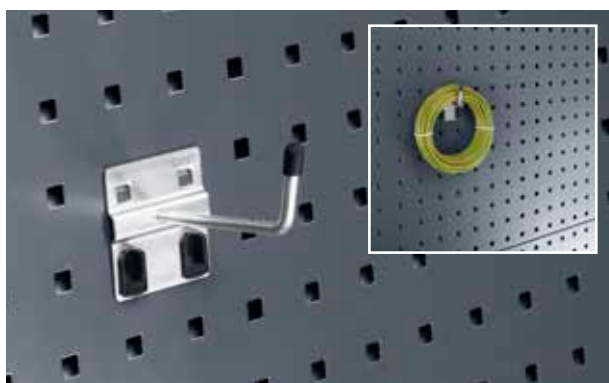
- Powder-coated steel, anthracite grey RAL 7016
- With 2 locations, max. Ø 70 mm



Pack quantity	1
Dimensions W x D x H mm	175 x 87 x 70
Order ref.	14021053.19V

### perfo extended hook

- With wide backplate
- Extended hook end (35 mm)



Pack quantity	5	5	5
Dimensions W x D x H mm	60 x 25 x 60	60 x 50 x 60	60 x 75 x 60
Order ref.	14001117	14001119	14001121

### perfo water dispenser set

- 10 litre holding capacity
- Dispensing tap on container base
- With aluminium shelf and fixing strap



Pack quantity	1
Dimensions W x D x H mm	370 x 185 x 375
Order ref.	63003059.19V

### perfo paper roll holder, self-securing

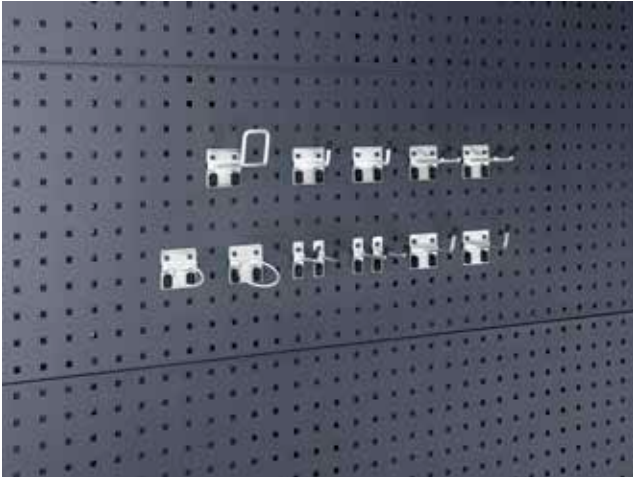
- For paper rolls with a max. width of 260 mm, Ø 280 mm
- Includes 1 paper roll



Version	paper roll holder	Paper rolls
Pack quantity	1	12
Dimensions W x D x H mm	315 x 185 x 180	200 x 130 x 130
Order ref.	63003058.19V	63003074.90V



## perfo hook kit

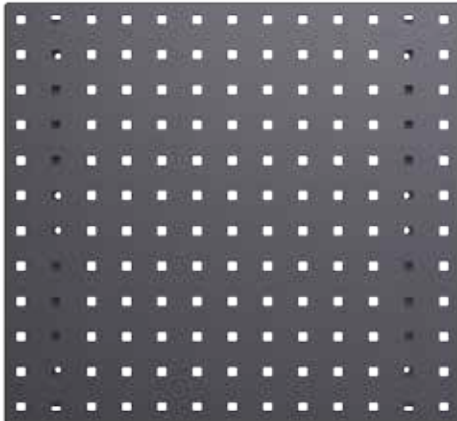


- Contents
- 2 Hooks D 50 mm
- 2 Hooks D 75 mm
- 2 Extended hooks D 50 mm
- 2 Extended hooks D 75 mm
- 2 Double hooks 75 mm
- 1 Cable hook 100 mm
- 1 Power tool holder 40 mm
- 1 Power tool holder 60 mm
- 1 perfo spanner

Order ref.

14030215

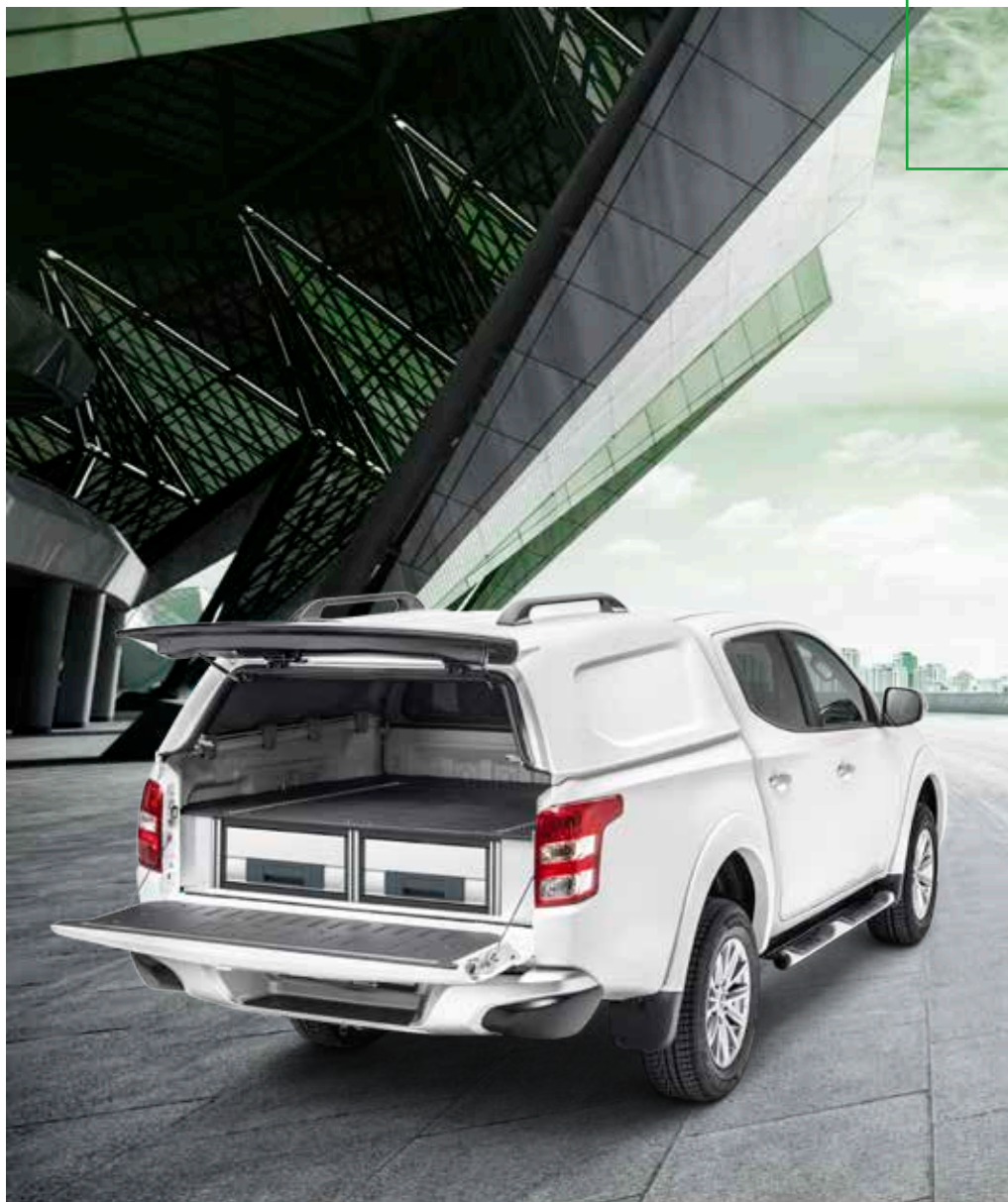
## perfo perforated panels



- High rigidity due to side folds
- Additional reinforcements on the back
- Perforation: 9.2 x 9.2 mm, hole spacing: 38.1 mm
- Accessories lock into place with the supplied clip
- Hole spacing is maintained across the panel edge in multiple panel installations

Dimensions W x D x H mm	495 x 13 x 457	991 x 13 x 457	1486 x 13 x 457	1981 x 13 x 457
Order ref.	14025115.19	14025117.19	14025118.19	14025119.19

## Pickups



### Fiat Fullback

The bott underfloor module divides the storage space into two levels. This creates a larger usable storage space in your pickup. The fully retractable drawers can be loaded with up to 50 kg and can be subdivided as your needs dictate. Integrated longitudinal lashing rails offer flexible load securing options.

#### Load-securing net made from webbing



- Load-securing net made from bott belt webbing in anthracite grey
- Tested according to VDI 2700
- Mesh size 150 x 150 mm
- Load capacity up to 800 daN
- Ratchet strap around circumference

Version	4x hook
Dimensions W x D mm	3000 x 1900
<b>Order ref.</b>	<b>62627005.19V</b>

## Underfloor module for the pickup with double cab and hardtop



- Lashing rails on the load deck
- Large storage space
- Drawers with full extension slides
- Theft protection, since the stored material is not visible from the outside
- A hardtop must be in place over the cargo area, since the components are not weather resistant



Year of construction	2017
Wheelbase mm	3095
Construction height	260
Number of drawers at the rear mm	2x 200
<b>Order ref.</b>	<b>60010201.19V</b>
	Further variants available on request.

## bottTainer with hinged lid for pickups



- Compact transport box for all conventional pickup models
- Slip-resistant aluminium chequer plate lid
- Gas spring secures lid in open position
- Robust lock secures transported goods against theft

External dimensions W x D x H mm	1030 x 650 x 600
Load capacity kg	200
Weight kg	38
<b>Order ref.</b>	<b>60020009.51M</b>

bottTainer

Anti-theft protection

Fast and ergonomic access

Optimal storage space  
organisation





## Storage space organisation

The bottTainer is excellent for organising storage space and restraining loads on open cargo areas. Thanks to the sub-divided storage compartments, you always have a good overview of the equipment on your flat-bed. You can access your materials and tools quickly and ergonomically at any time via the internal drawers, which are secured and protected with doors or shutters.

The robust frame construction ensures the bottTainer has exceptional strength. The seals protect your equipment from water ingress and ensure it stays dry. With the robust locks, your goods are always protected against theft. You can select your preferred bottTainer model from many different pre-configured versions, or you can let us configure it for you according to your individual ideas.





## Stability

- Exceptional strength thanks to robust frame construction
- Hard-wearing surfaces: Zinc-plated sheet steel sides and floor
- Body with edge protection strips

## Order and convenience

- Optimum storage compartment organisation thanks to construction with vario system components
- Drawer dividers for the clear storage of small parts
- Quick access to the most important equipment via side doors, roller shutters, internal drawers without climbing onto the flatbed

## Versatility

- Versatile versions with aluminium chequer plate lid or aluminium roller shutter
- Various storage space layouts and configurations
- Individual configuration also possible as an alternative to predefined versions

## Protection and security

- Easy load restraint on the flatbed
- High weather and splash protection for tools and materials
- Theft protection for transported goods through lockable two-point locking mechanism
- Adjustable feet guarantee protection against floor dampness

## bottTainer with hinged lid



- Slip-resistant aluminium chequer plate lid
- Gas spring secures lid in open position
- Two robust locks secure transported goods against theft

External dimensions W x D x H mm	1750 x 650 x 760	1930 x 650 x 760
Load capacity kg	200	200
Weight kg	63	69
<b>Order ref.</b>	<b>60020001.51M</b>	<b>60020002.51M</b>

## bottTainer with hinged lid and removable shelf



- Slip-resistant aluminium chequer plate lid
- Kitted with 2-piece, removable intermediate shelf
- Gas spring secures lid in open position
- Two robust locks secure transported goods against theft

External dimensions W x D x H mm	1750 x 650 x 760	1930 x 650 x 760
Load capacity kg	300	300
Weight kg	71	77
<b>Order ref.</b>	<b>60020003.51M</b>	<b>60020004.51M</b>

## bottTainer divider for shelves



- Divider for positioning above the intermediate shelf

<b>Order ref.</b>	<b>63001110.98V</b>
-------------------	---------------------

## bottTainer with doors and intermediate shelf



- Slip-resistant aluminium chequer plate lid
- Possible versions:
  - left and right, each with 1 large door or each with 2 doors located one above the other with sturdy locks
- Firmly secured intermediate shelf
- Upper door can also be opened when the drop sides are closed
- The lower compartment can be configured with drawers as an option
- Incl. divider for subdividing the top compartment

Drawer set*	Standard duty 40 kg	Standard duty 50 kg
Dimensions W x D x H mm	1x 175x540 / 1x 300x540	1x 175x795 / 1x 300x795
<b>Order ref.</b>	<b>60022011.19M</b>	<b>60022012.19M</b>

External dimensions W x D x H mm	1750 x 630 x 1130	1750 x 630 x 1130	1930 x 630 x 1130	1930 x 630 x 1130
Version	4 doors	2 doors	4 doors	2 doors
Load capacity kg	300	300	300	300
Weight kg	99	98	106	105
<b>Order ref.</b>	<b>60022001.51M</b>	<b>60022003.51M</b>	<b>60022002.51M</b>	<b>60022004.51M</b>

## bottTainer with roller shutters



- Weatherproof and lockable roller shutter made of robust aluminium
- Quick access to the complete usable volume



External dimensions W x D x H mm	1365 x 710 x 910
Version	Drop-front shelves, bottBox sliding shelf with bottBoxes
Weight kg	76
<b>Order ref.</b>	<b>60021011.51M</b>

**bottTainer crane lift rings**



- 4 crane lift rings for quick mobile transport
- Powder-coated
- Colour: jet black (RAL 9005)
- Fixings included

Order ref.	90099590.63
------------	-------------

**bottTainer forklift base**



- Forklift base for quick mobile transport
- Zinc-plated
- Includes fixing kit

For bottTainer	with hinged lid	with roller shutter
Dimensions D x H mm	650 x 130	710 x 130
Order ref.	60020018.51M	60021006.51M

## bott flatbed storage compartment



- For mounting on the flatbed for quick and simple load restraint
- For transporting shovels, brooms and other tools
- Width is adjustable from 1700 - 2136mm, thus suitable for almost all flatbeds
- Robust construction made of weather-resistant aluminium chequer plate, secured at each end when the drop-sides are closed



Version	Flatbed storage compartment	Fixing kit
Dimensions W x D x H mm	1700 - 2136 x 622 x 382	
<b>Order ref.</b>	<b>60020029.98V</b>	<b>90099667</b>

## Load-restraint blanket for flatbed vehicles



- For securing the load on the flatbed
- Especially suitable for loose or bulky transported goods
- Theft protection thanks to the opaque fabric
- Tested according to VDI 2700
- Load capacity up to 200 daN
- Colour: anthracite grey
- 4 fabric dimensions for all common flatbed sizes
- Incl. lashing eyes for the drop sides



Flatbed length	2100-2650	2650-3200	3200-3750	3750-4300
Fabric version	S	M	L	XL
<b>Order ref.</b>	<b>62627015.19V</b>	<b>62627016.19V</b>	<b>62627017.19V</b>	<b>62627018.19V</b>





*„All of my tools are stored securely in the bottTainer.  
I carry everything I need at the construction site with me on my  
flatbed. It's stored in a dry and clean place that is also locked.  
Thieves therefore haven't got a chance.“*





If you have questions relating to bott products or would like to place an order by telephone,  
please contact our dialog-aktiv tele-sales team on:  
**+49 (0) 7971 / 251 – 251.**

Alternatively, please send an email to: **info@bott.de**

**www.bott.de**

Bott GmbH & Co. KG, Bahnstraße 17, 74405 Gaildorf, Germany  
dialog-aktiv: Tel: +49 (0)79 71 / 251-251, Fax: +49 (0)79 71 / 251-205

